



Two-way Reactive Power Splitter, 555–2700 MHz (Additional mounting bracket PN:42396A-17 sold separately)

OBSOLETE

This product was discontinued on: July 31, 2021

Replaced By:

S-2-UW-H-43-I6 Ultra Wideband Two-way Low PIM Reactive High Power Splitter, 555–6000 MHz (Additional mounting bracket PN:42396A-17 sold separately)

Product Classification

Regional Availability	Asia Australia/New Zealand EMEA Latin America North America
Product Type	Power splitter

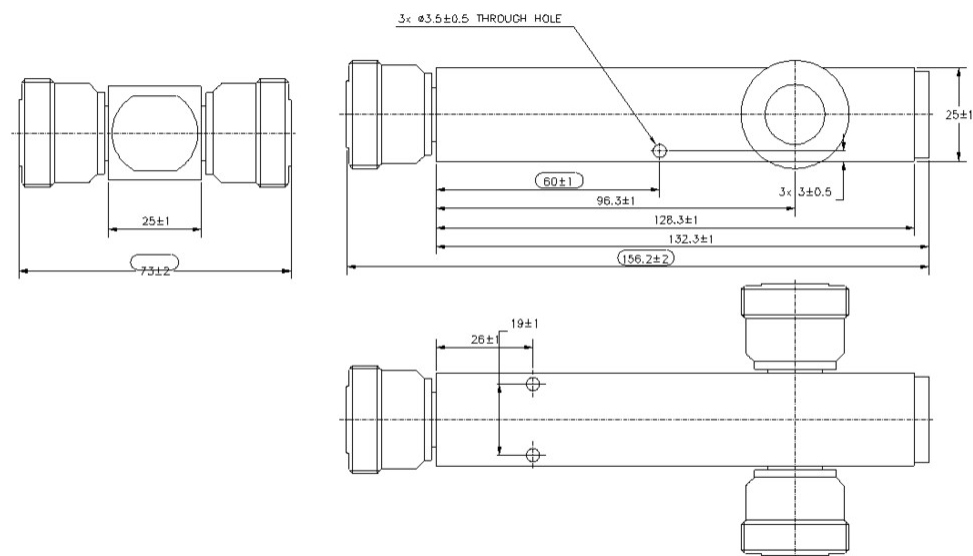
General Specifications

Device Type	Splitter
Application	Indoor/Outdoor
Color	Silver
Inner Contact Plating	Silver
Interface	7-16 DIN Female
Outer Contact Plating	Trimetal

Dimensions

Height	25 mm 0.984 in
Width	73 mm 2.874 in
Length	156 mm 6.142 in

Outline Drawing



Electrical Specifications

3rd Order IMD	-160 dBc
3rd Order IMD Test Method	Two +43 dBm carriers
Insertion Loss at Frequency Band	0.2 dB @ 555–2700 MHz
Return Loss, minimum	20.8 dB
Average Power, maximum	300 W
Impedance	50 ohm
Operating Frequency Band	555 – 2700 MHz
Peak Power, maximum	3 kW
Power Rating, Splitting	300 W
Reflected Power, maximum	300 W
Split Loss	3 dB
VSWR	1.2

Mechanical Specifications

Coupling Nut Proof Torque	25 N·m 221.269 in lb
---------------------------	------------------------

Environmental Specifications

Operating Temperature	-35 °C to +85 °C (-31 °F to +185 °F)
Relative Humidity	Up to 100%

Ingress Protection Test Method IEC 60529:2001, IP65

Packaging and Weights

Height, packed	40 mm 1.575 in
Width, packed	90 mm 3.543 in
Length, packed	180 mm 7.087 in
Volume	648000 mm³ 39.544 in³
Weight, gross	0.45 kg 0.992 lb
Weight, net	0.38 kg 0.838 lb

Regulatory Compliance/Certifications

Agency	Classification
CHINA-ROHS	Below maximum concentration value
ISO 9001:2015	Designed, manufactured and/or distributed under this quality management system
REACH-SVHC	Compliant as per SVHC revision on www.commscope.com/ProductCompliance
ROHS	Compliant

