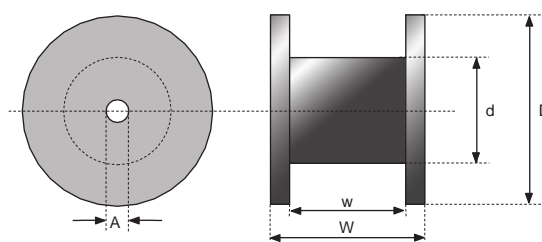


CABLE PACKING AND HANDLING INFORMATION

The coaxial cable will be supplied on wooden drums made of planed wooden boards or plywood. In order to protect the cable during transportation and storage, the drums will be battened with wooden boards nailed on the flanges.

The drums are provided with a label containing cable information as cable type, cable length and production batch (see label on right). The drums can be impregnated on request.

The standard drum sizes used for the different cable types are shown in the table below.



Most used drums per cable type^[1]:

Cable type		Drum type	Usual length (m)	Outer diam. ^[2] D (cm)	Drum diam. d (cm)
EC1-50 (5062)	1/4"	HE 07	up to 800	70	40
EC1-50 (5062)	1/4"	HE 08 HF	from 800 to 1350	80	40
EC1-50-HF (5042)	1/4" Hiflex	HE 07	up to 1200	70	40
EC1-50-HF (5042)	1/4" Hiflex	HE 08 HF	from 1200 to 2150	80	40
EC2-50 (5088)	3/8"	HE 07	up to 500	70	40
EC2-50 (5088)	3/8"	HE 08 HF	from 500 to 900	80	40
EC4-50 (5128)	1/2"	HE 07	up to 250	70	40
EC4-50 (5128)	1/2"	HE 08 HF	from 250 to 500	80	40
EC4-50 (5128)	1/2"	HE 12	from 500 to 1500	120	40
EC4-50-HF (5092)	1/2" Hiflex	HE 07	up to 330	70	40
EC4-50-HF (5092)	1/2" Hiflex	HE 08 HF	from 330 to 750	80	40
EC4-50-HF (5092)	1/2" Hiflex	HE 12	from 750 to 1500	120	40
EC4.5-50 (5168)	5/8"	HE 12	up to 800	120	40
EC4.5-50 (5168)	5/8"	HE 13	from 800 to 1300	130	47
EC5-50-A (5228A)	7/8" A	HE 12	up to 500	120	40
EC5-50-A (5228A)	7/8" A	HE 13	from 500 to 850	130	47
EC5-50-HF (5228X)	7/8" Hiflex	HE 12	up to 500	120	40
EC5-50-HF (5228X)	7/8" Hiflex	HE 13	from 500 to 850	130	47
EC6-50-A (5328A)	1-1/4" A	HF 17S	up to 500	170	90
EC6-50-A (5328A)	1-1/4" A	HF 17B	from 500 to 700	170	90
EC6-50-A (5328A)	1-1/4" A	HF 20S	from 700 to 1000	200	90
EC6-50-HF (5328X)	1-1/4" Hiflex	HF 17S	up to 500	170	90
EC6-50-HF (5328X)	1-1/4" Hiflex	HF 17B	from 500 to 700	170	90
EC6-50-HF (5328X)	1-1/4" Hiflex	HF 20S	from 700 to 1000	200	90
EC7-50-A (5438A)	1-5/8" A	HF 17B	up to 400	170	90
EC7-50-A (5438A)	1-5/8" A	HF 18	from 400 to 500	180	90
EC7-50-A (5438A)	1-5/8" A	HF 20S	from 500 to 650	200	90
EC7-50-A (5438A)	1-5/8" A	HF 20B	from 650 to 900	200	90

[1] These combinations cable/length/drum are examples of the most common cases. Others are possible under request.

[2] battened + 5 cm

[3] Depending on the humidity of the wood, drum weights can vary greatly!

[4] Standard PE jacket