

RADWIN Alpha Model

Point-to-Point Radio - Data Sheet (RW2000/ODU/Alpha/F35/UNI/INT/500M)



RW-2935-6HC5

Product Description

RW-2935-6HC5 is a carrier-class radio that belongs to the RADWIN 2000 Alpha Series and supports 3.5 GHz frequency band.

The Radio complies with Universal bands with a factory default of 3.5 GHz Universal.

RW-2935-6HC5 delivers up to 500 Mbps throughput.

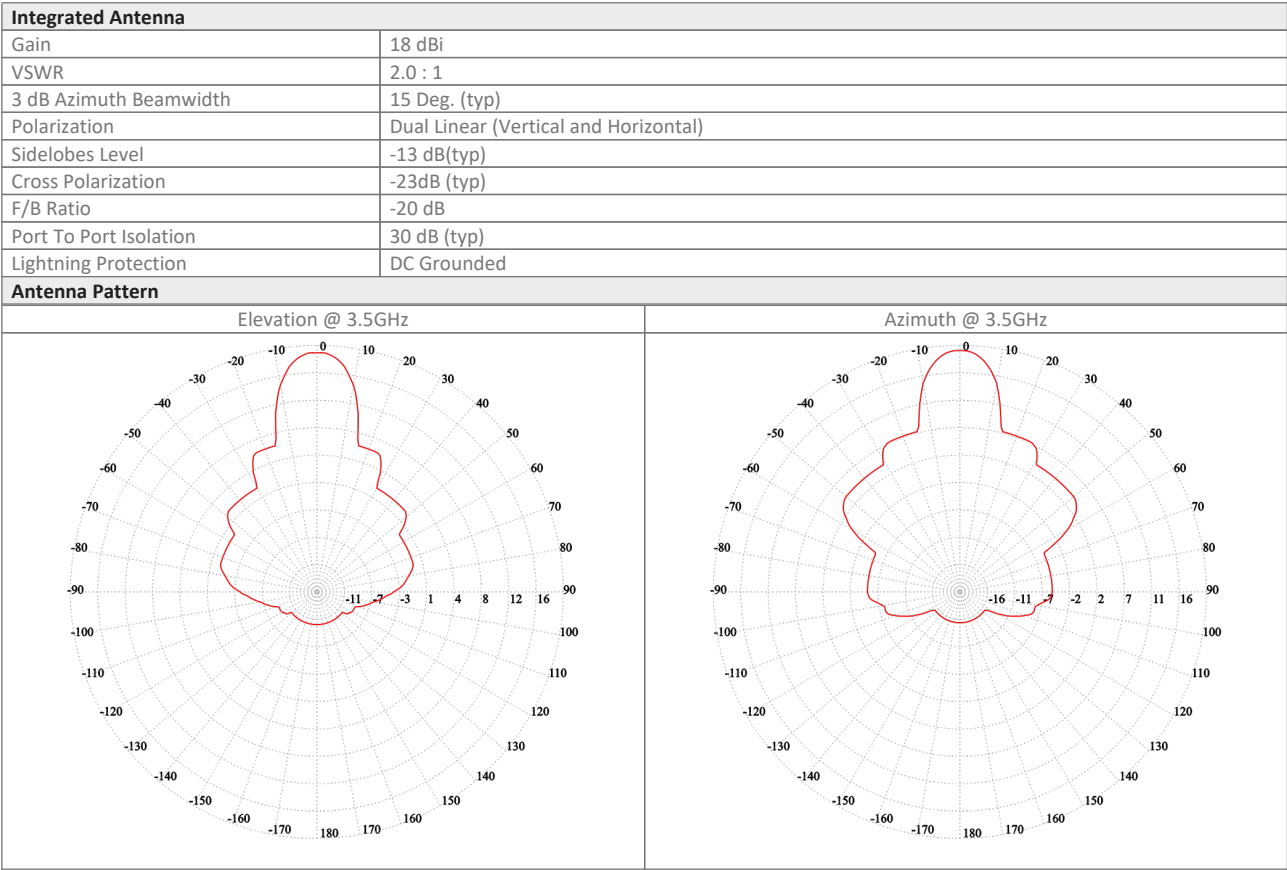
The unit includes an integrated antenna.

Product Highlights

- Up to 500 Mbps net aggregated throughput
- Telco-grade, extremely robust in harsh conditions
- Supports intra-site synchronization to maximize capacity
- Configurable asymmetric throughput
- Advanced OFDM & MIMO technologies for operation in nLOS/NLOS and dense radio environments
- Integrated 19dBi antenna
- IP-67
- Can operate as SU PRO
- Support AES 256 encryption over the air (from release 5.1.30)

Product Specifications:

Configuration					
Architecture	Outdoor Unit with an integrated antenna				
PoE to ODU Interface	Outdoor CAT-5e; Maximum cable length: 100m for 10/100BaseT and 75m for 1000BaseT				
Radio					
Max Capacity	500 Mbps net aggregate throughput (up to 250 Mbps per direction)				
Range	Up to 40 km / 25 miles *				
Channel Bandwidth	Configurable: 10, 20, 40, 80 MHz (for the default band)				
Modulation	MIMO-OFDM (BPSK/QPSK/16QAM/64QAM/256QAM)				
Adaptive Modulation & Coding	Supported				
Automatic Channel Selection	Supported upon power up				
DFS	Not Supported				
Diversity	Supported				
Spectrum Viewer	Supported				
Max Tx Power	24 dBm per chain				
Duplex Technology	TDD				
Error Correction	FEC k = 1/2, 2/3, 3/4, 5/6				
Encryption	AES 128				
Support Indoor units	RADWIN PoE devices (9921-400X)				
Uplink / Downlink Allocation	Configurable: Symmetric or Asymmetric				
QoS	Packet classification to 4 priority queues according to 802.1P or Diffserv				
VLAN Support	802.1Q, QinQ, 4094 VLANs				
TDD Intra Site Synchronization	Supported				
TDD Inter Site Synchronization	Supported through common GPS receiver per site				
ODU Management	IPv4/IPv6 dual-stack; SNMPv1, SNMPv3; HTTP/HTTPS using web browser				
Option 82	Supported				
RADIUS Authorization	Supported				
RADIUS User authentication	Supported				
Syslog	Supported				
Supported Bands					
Band	CBW 10MHz [GHz]	CBW 20MHz [GHz]	CBW 40MHz [GHz]	CBW 80MHz [GHz]	Radio Compliance
3.5 GHz Universal	3.395-3.805	3.390-3.810	3.380-3.820	3.360-3.840	Universal
Mechanical					
ODU Dimensions	32.5(w) x 32.5(h) x 6.4(d) cm				
ODU Weight	2 kg / 4.41 lbs				
Power					
Power Feeding	Power provided over ODU-IDU cable				
Power Consumption	<13W				
Environmental					
Operating Temperatures	-35°C to 60°C / -31°F to 140°F				
Humidity	100% condensing, IP67 (totally protected against dust and against immersion in water up to 1m)				
Safety					
EU/Intl	EN/IEC 62368-1, EN/IEC 60950-22				
USA	cTUVus: UL 60950-1, UL 60950-22				
EMC					
FCC	FCC 47 CFR, Part15, Subpart B, Class B				
ETSI	ETSI EN 301 489-1, ETSI EN 301 489-4, ETSI 301 489-17				
Canada	ICES-003, CISPR 32, Class B				
AS/NZS	CISPR 32, Class B				



Ordering Info
Part Number: RW-2935-6HC5
Description: RADWIN Alpha ODU, with an integrated antenna, supporting 3.5 GHz Universal frequency band.

* May be limited by regulation in the specific band being used

Datasheet information can be changed by manufacturer without prior notice