

Installation Guide

Model	Page
08AA	304
09AA	306
11AA	309
36AA	311
38AA	313
50AA	316
51AA	319
58AA	320

Antenna (08A) Installation Guide

Issue: 02



NOTE

- 1, Only qualified personnel are allowed to install the antenna.
- 2, Appearance of the actual antenna may differ from the pictures.

Installation Tools



13 mm combination wrench (2 PCS)



Inclinometer

Bracket Subassembly



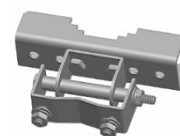
(1 PCS)



(M8 4 PCS)

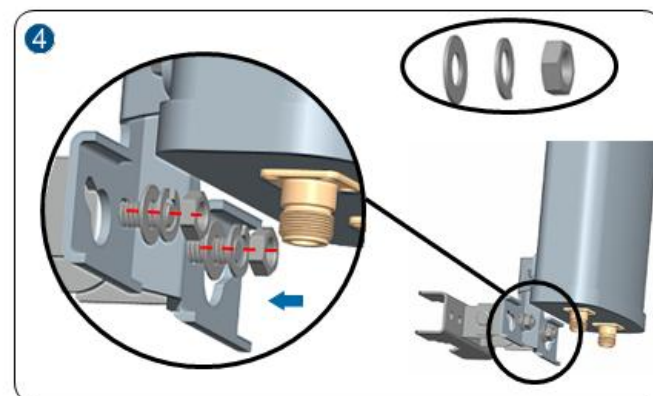
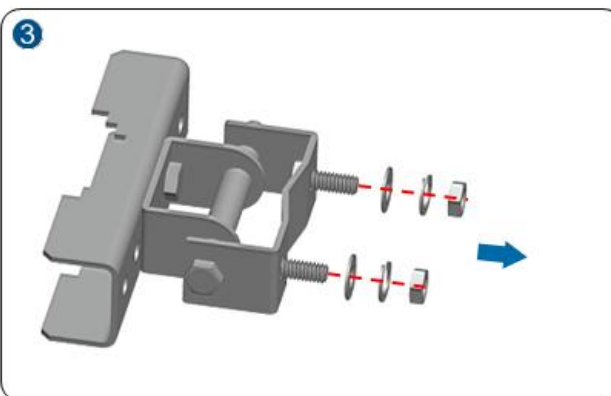
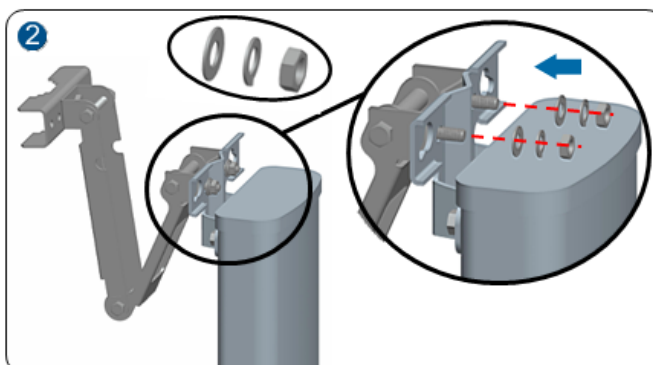
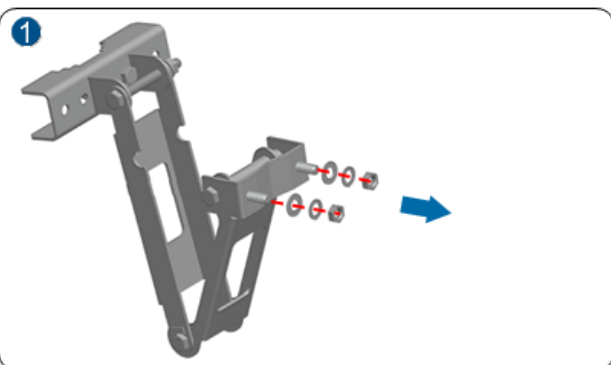


(2 PCS)

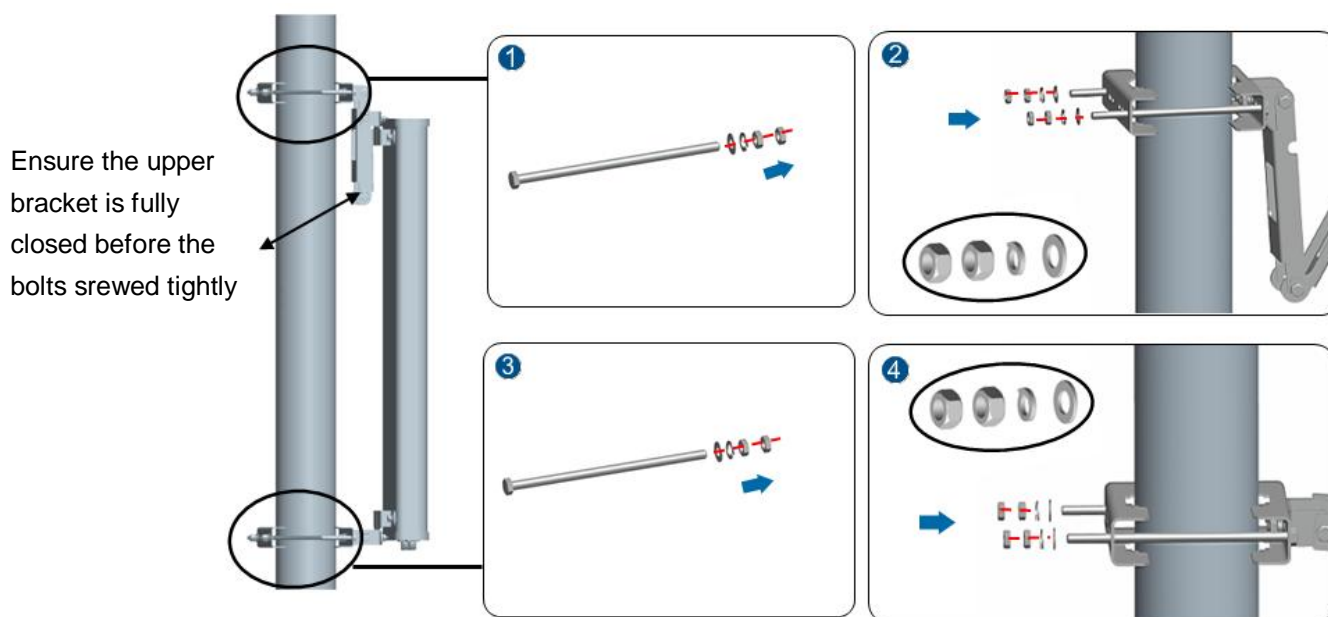


(1 PCS)

1 Install the bracket



2 Install the antenna



3 Adjust the mechanical mechanical downtilt angle

Metho

Precise measurement

Before adjustment, adjust the inclinometer to the desired downtilt angle. After adjustment, locate the bead in the inclinometer in the middle.



Finally, tighten all the nuts. Recommended torque see Table 1.

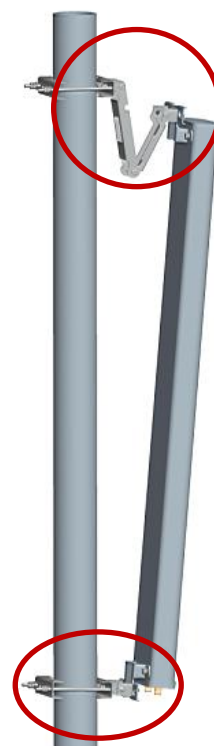
Table 1

Screws size	Torque
M8	18 Nm



Note

1. Make sure the antenna is installed in a safe and suitable location and well clear away from high power lines.
2. Do not attempt to carry out installation when it is raining, snowing or during stormy Weather.
3. Do not attempt to install the antenna on a pole of diameter other than the specified 50~115mm.
4. The Electrical Downtilt Antennas should be checked for under controlling by HCU(Hand-held Control Unit) before they been installed.



For particular installation, please contact Tongyu Communication Inc.

Antenna (09A) Installation Guide

Issue: 03



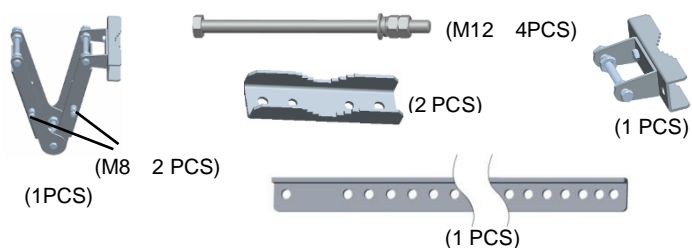
NOTE

- 1, Only qualified personnel are allowed to install the antenna.
- 2, Appearance of the actual antenna may differ from the pictures.

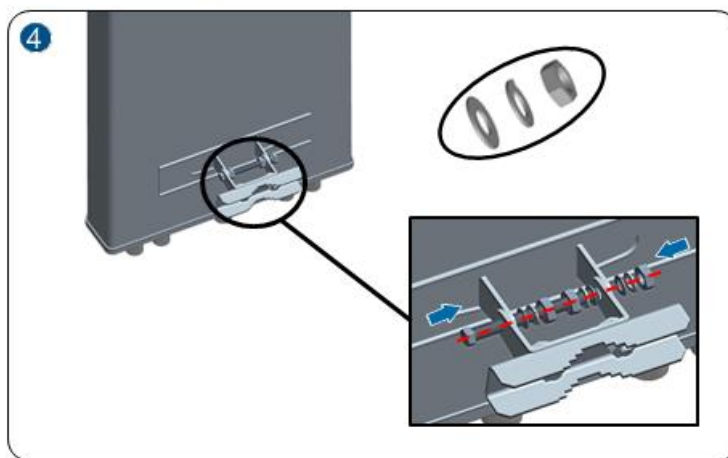
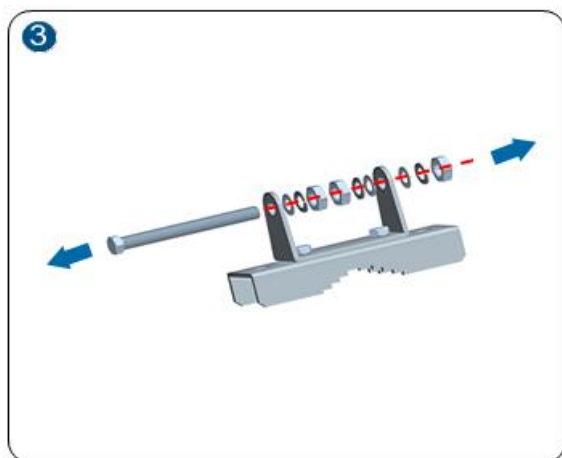
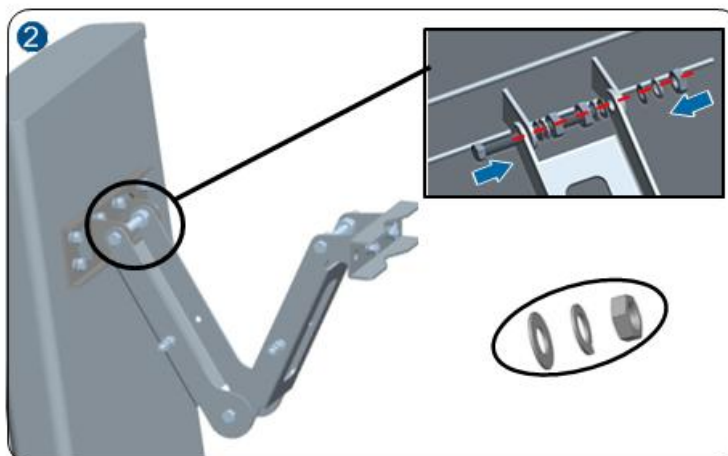
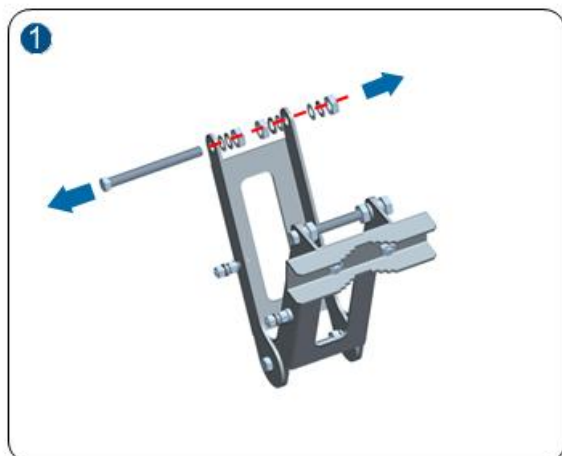
Installation Tools



Bracket Subassembly

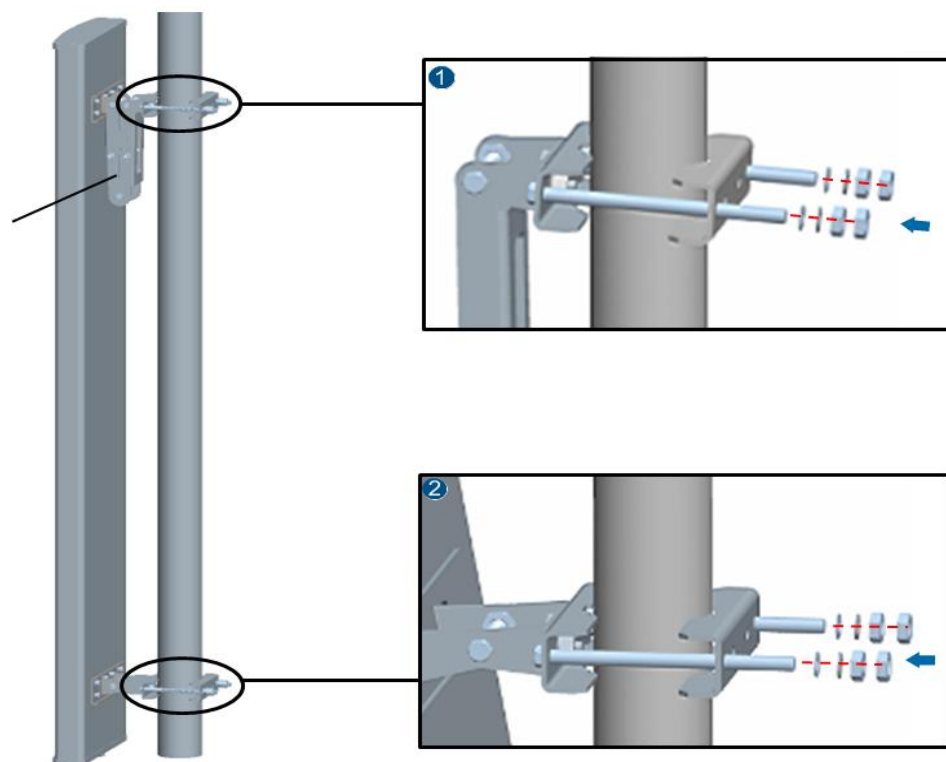


1 Install the bracket

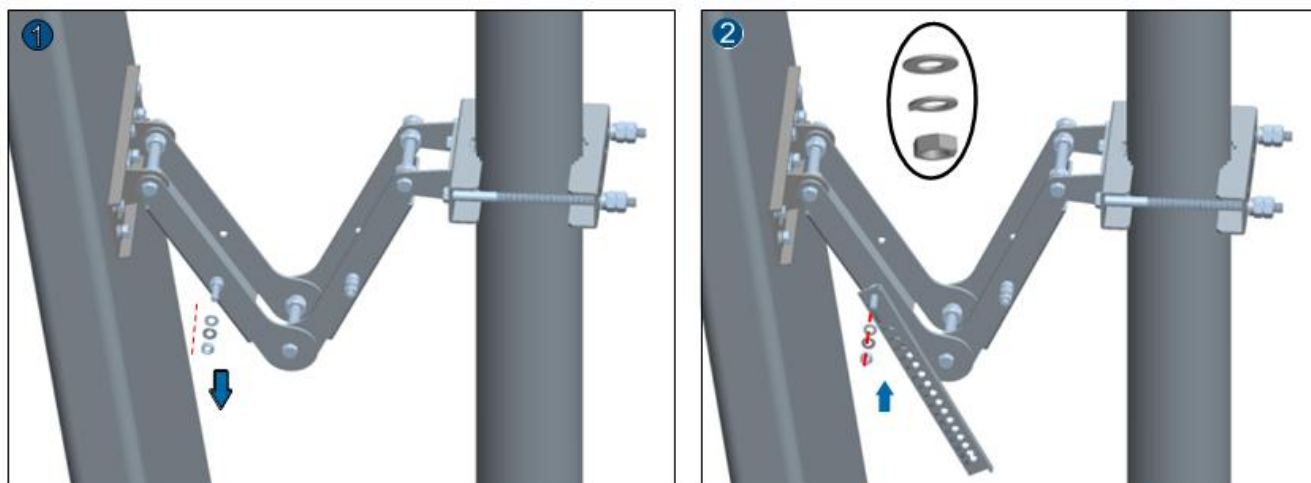


2 Install the antenna

Ensure the upper bracket is fully closed before the bolts are screwed tightly



3 Install the antenna



4 Adjust the mechanical downtilt angle

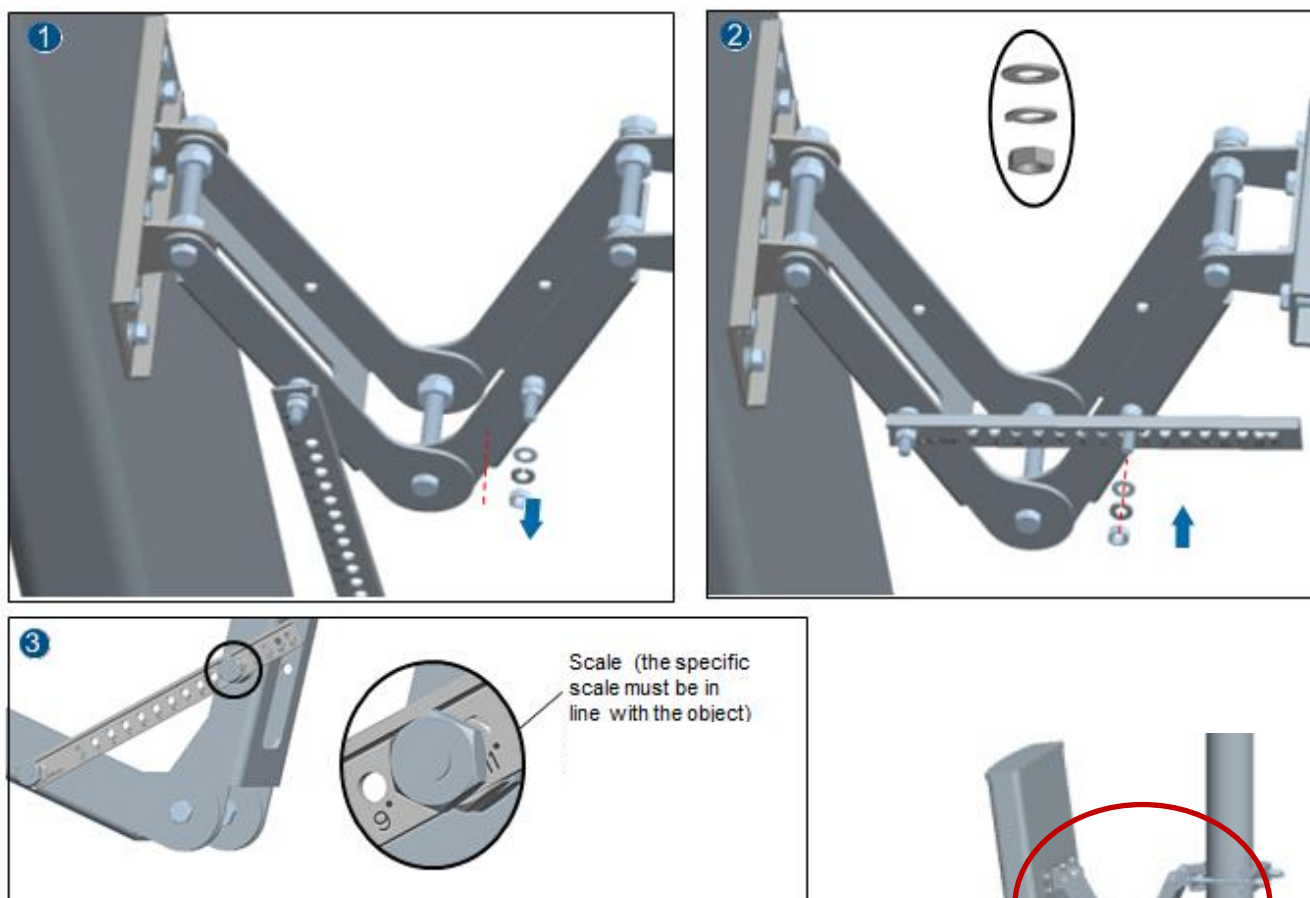


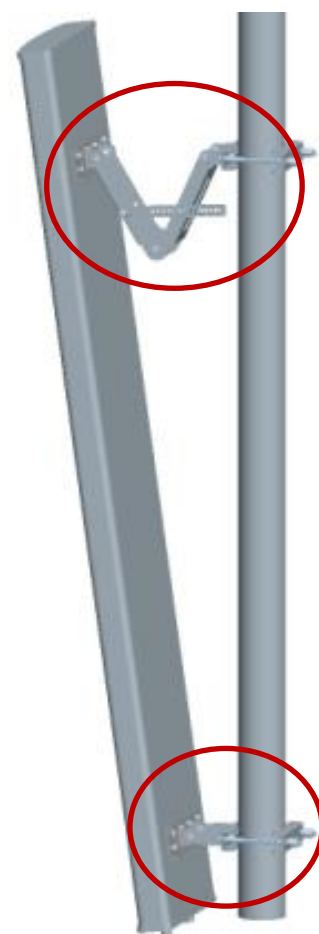
Table 1

Finally, tighten all the nuts.
Recommended torque see
Table 1.

Screws size	Torque
M8	18 Nm
M12	32 Nm

Note

1. Make sure the antenna is installed in a safe and suitable location and well clear away from high power lines.
2. Do not attempt to carry out installation when it is raining, snowing or during stormy weather .
3. Do not attempt to install the antenna on a pole of diameter other than the specified 50~115mm.
4. The Electrical Downtilt Antennas should be checked for under controlling by HCU(Hand-held Control Unit) before they been installed.



For particular installation, please contact Tongyu Communication Inc.

Antenna (11A) Installation Guide

Issue: 03



NOTE

- 1, Only qualified personnel are allowed to install the antenna.
- 2, Appearance of the actual antenna may differ from the pictures.

Installation tools



10 mm combination wrench (2 PCS)

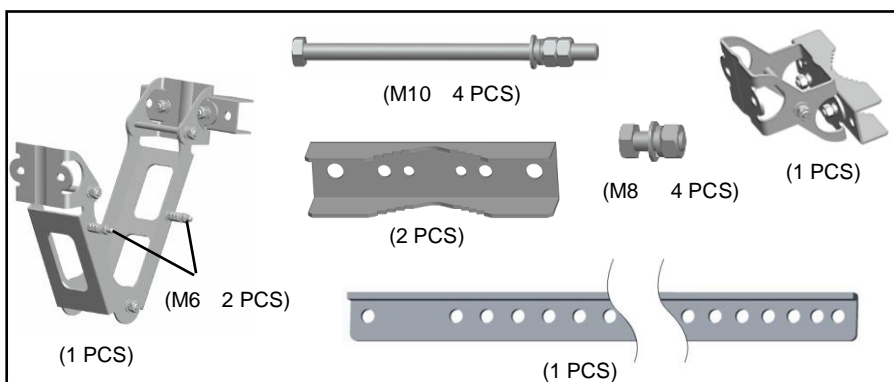


13 mm combination wrench (2 PCS)

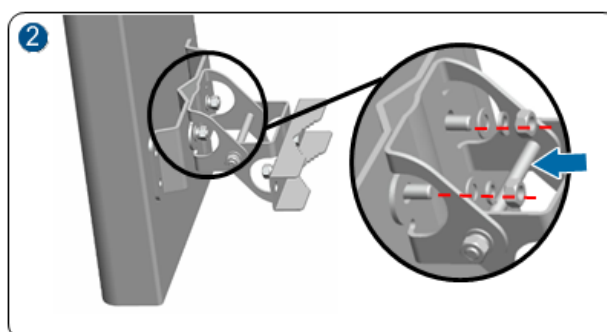
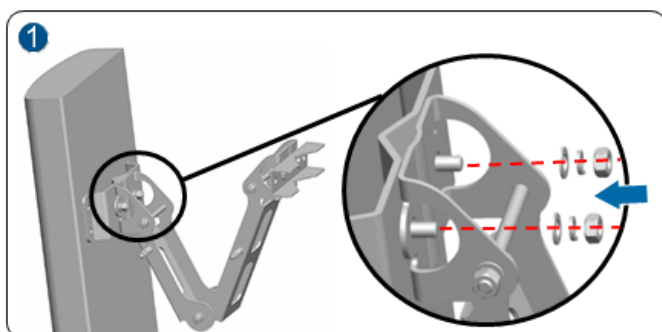


16 mm combination wrench (2 PCS)

Bracket Subassembly

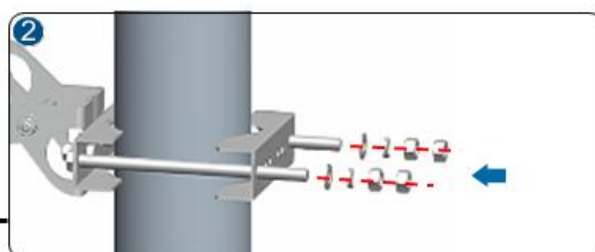
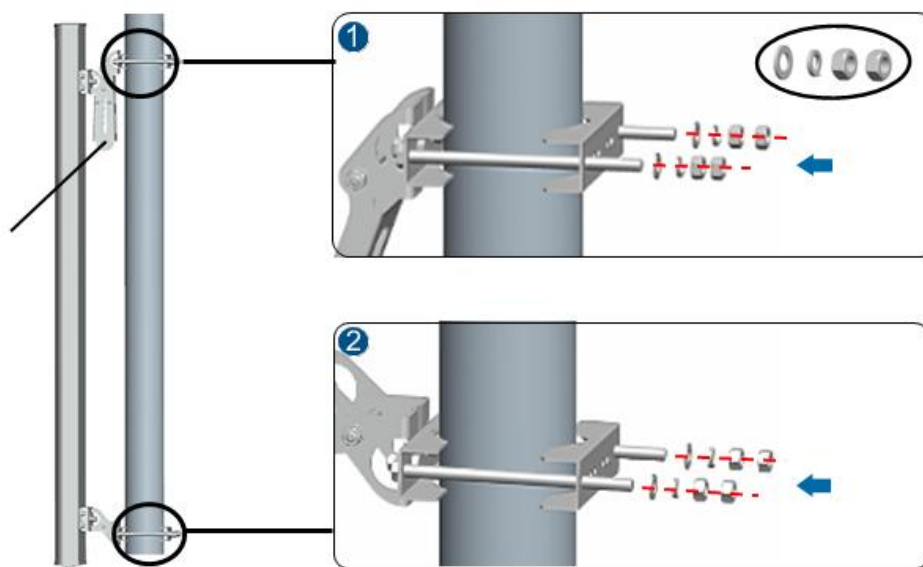


1 Install the bracket

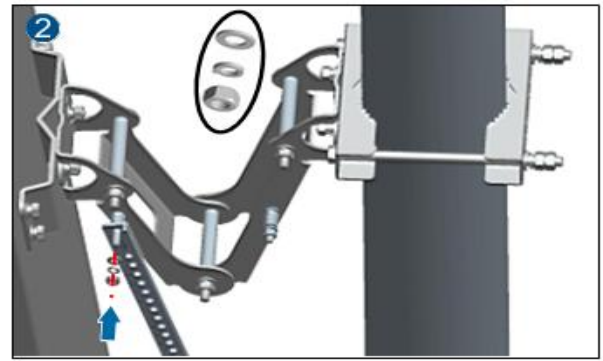
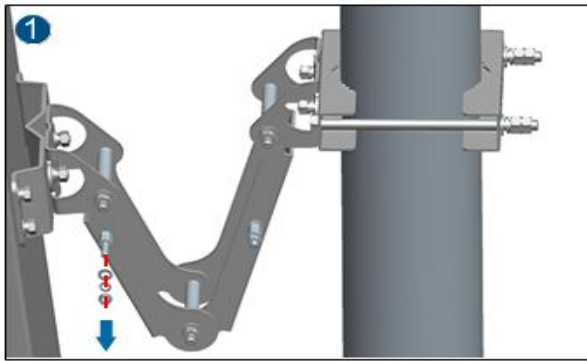


2 Install the antenna

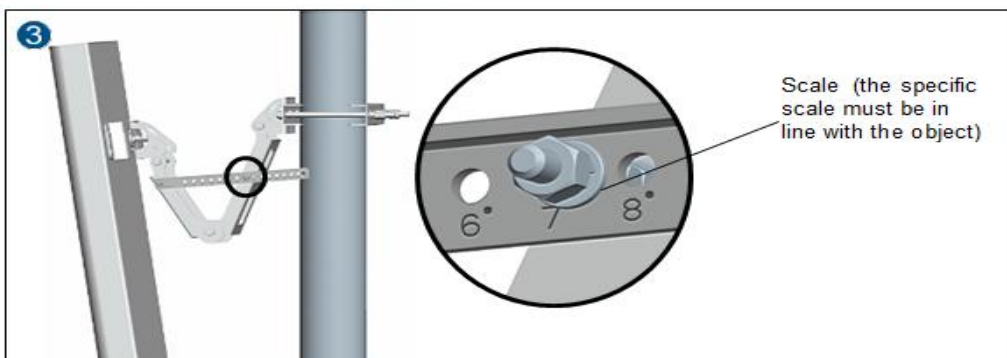
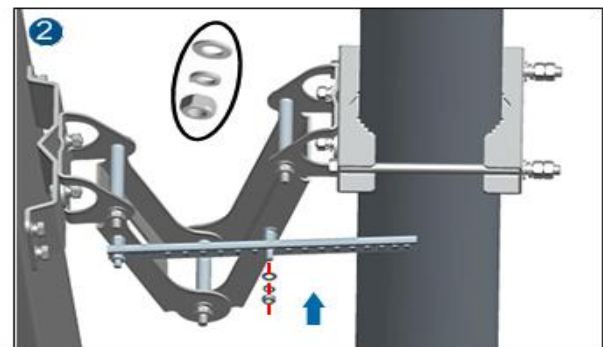
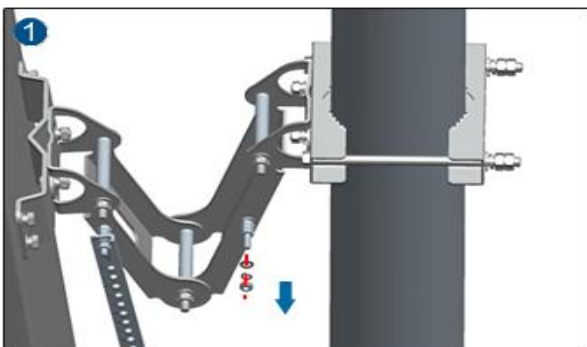
Ensure the upper bracket is fully closed before the bolts are screwed tightly



3 Install the scale



4 Adjust the mechanical downtilt angle



Finally, tighten all the nuts.

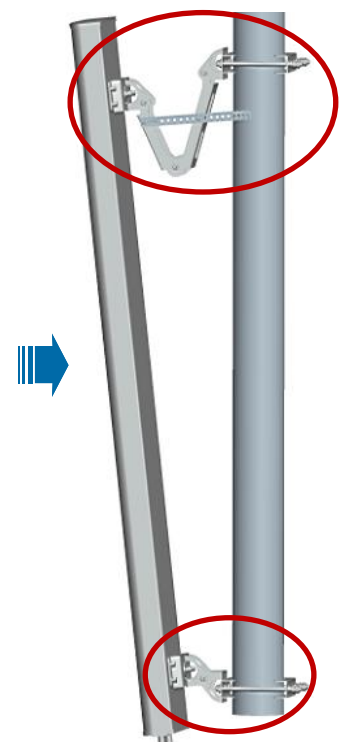
Recommended torque see Table 1.

Table 1

Screws size	Torque
M6	9 Nm
M8	18 Nm
M10	25 Nm

Note

1. Make sure the antenna is installed in a safe and suitable location and well clear away from high powerlines.
2. Do not attempt to carry out installation when it is raining, snowing or during stormy weather .
3. Do not attempt to install the antenna on a pole of diameter other than the specified 50~115mm..
4. The Electrical Downtilt Antennas should be checked for under controlling by HCU(Hand-held Control Unit) before they been installed.



For particular installation, please contact Tongyu Communication Inc.

36AA Mechanical Downtilt Antenna Installation Guide

Issue: 03



NOTE

- 1, Only qualified personnel are allowed to install the antenna.
- 2, Appearance of the actual antenna may differ from the pictures.

Installation tools



Tool	Specification	Qty
Spanner	10 (mm)	1 PCS
Spanner	17 (mm)	2 PCS
Spanner	19 (mm)	2 PCS

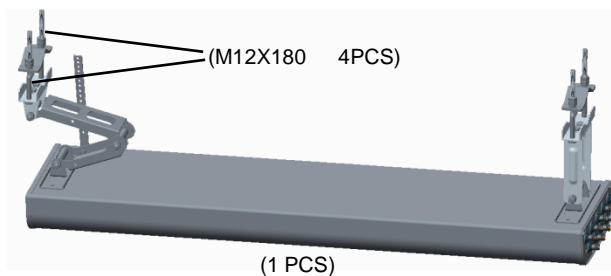


Inclinometer



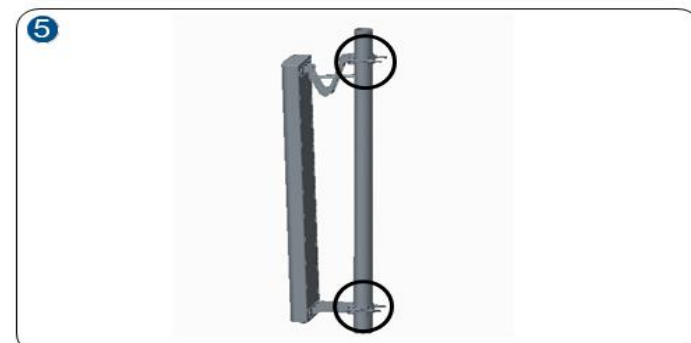
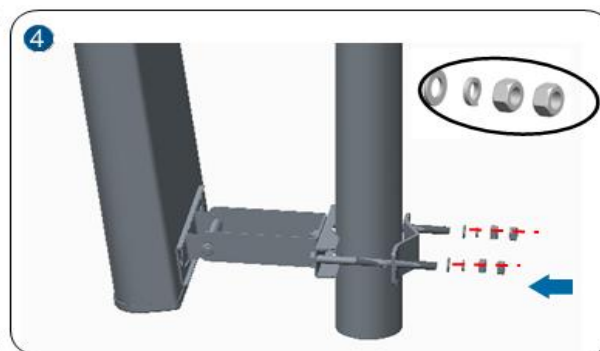
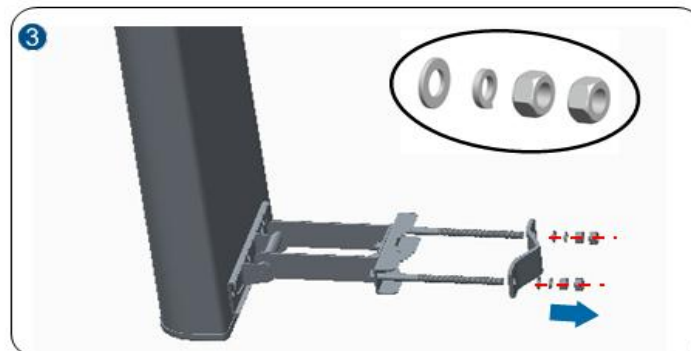
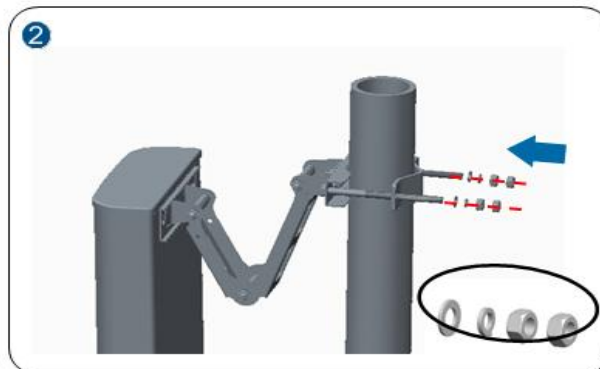
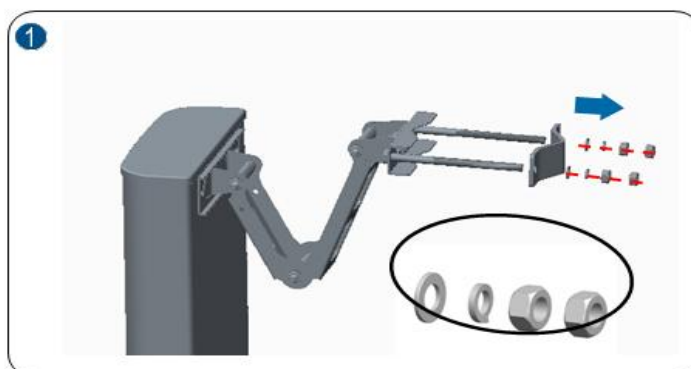
Compass

Bracket subassembly

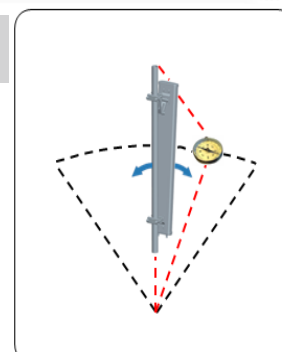


1 Install the antenna

Don't tighten the nuts on the upper and lower brackets at this moment.

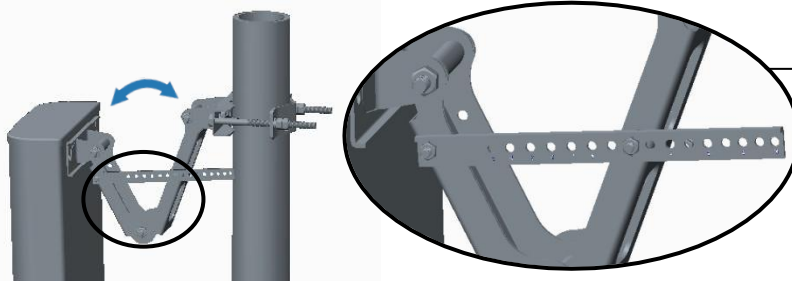


2 Adjust the azimuth



3 Adjust the mechanical downtilt angle

Method 1



Scale of bracket (the specific scale must be in line with the object)

Method 2

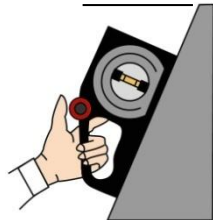


NOTE

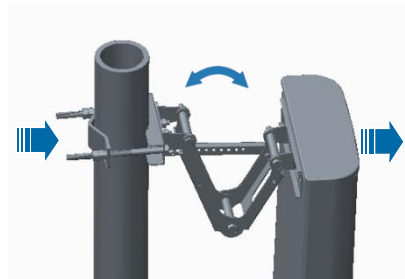
1. Before adjustment, adjust the inclinometer to the desired downtilt angle.
2. After adjustment, locate the bead in the inclinometer in the middle.

Finally, tighten all the nuts.
Recommended torque:
Table 3.1

Antenna back



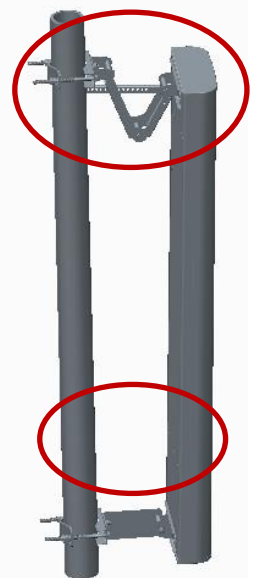
Before adjustment



After adjustment

● Table 3.1

Screws size	Torque
M6	9 Nm
M8	18 Nm
M10	25 Nm
M12	28 Nm



Note

1. Make sure the antenna is installed in a safe and suitable location and well clear away from high power lines.
2. Do not attempt to carry out installation when it is raining, snowing or during stormy weather.
3. Do not attempt to install the antenna on a pole of diameter other than the specified 50~115mm.
4. The Electrical Downtilt Antennas should be checked for under controlling by HCU(Hand-held Control Unit) before they been installed

For particular installation, please contact Tongyu Communication Inc.

Antenna (38A) Installation Guide

Issue: 03



NOTE

- 1, Only qualified personnel are allowed to install the antenna.
- 2, Appearance of the actual antenna may differ from the pictures.

Installation tools



10 mm combination wrench (2 PCS)



13 mm combination wrench (2 PCS)

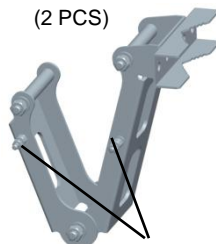


16 mm combination wrench (2 PCS)

Bracket subassembly



(2 PCS)

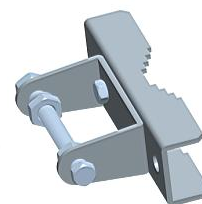


(1PCS)

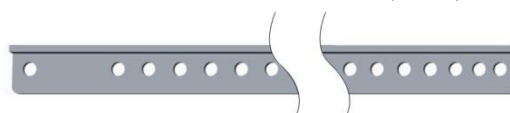
(M6 2 PCS)



(M10 4 PCS)



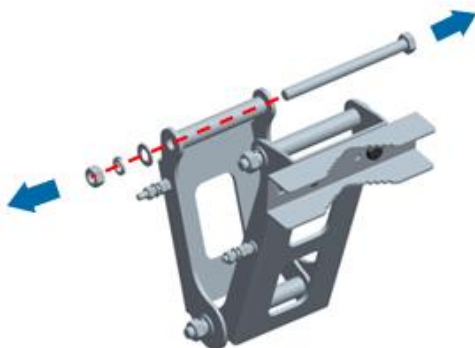
(1 PCS)



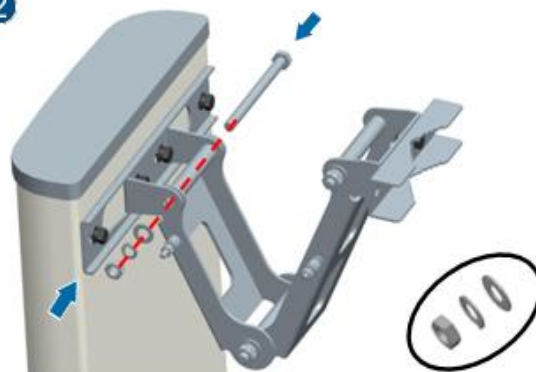
(1 PCS)

1 Install the bracket

1



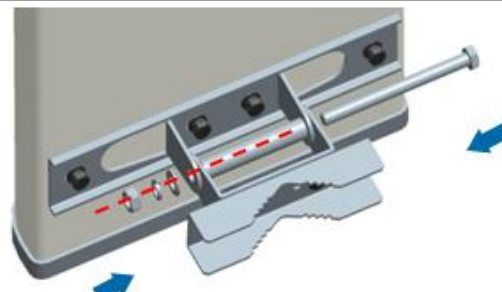
2



3

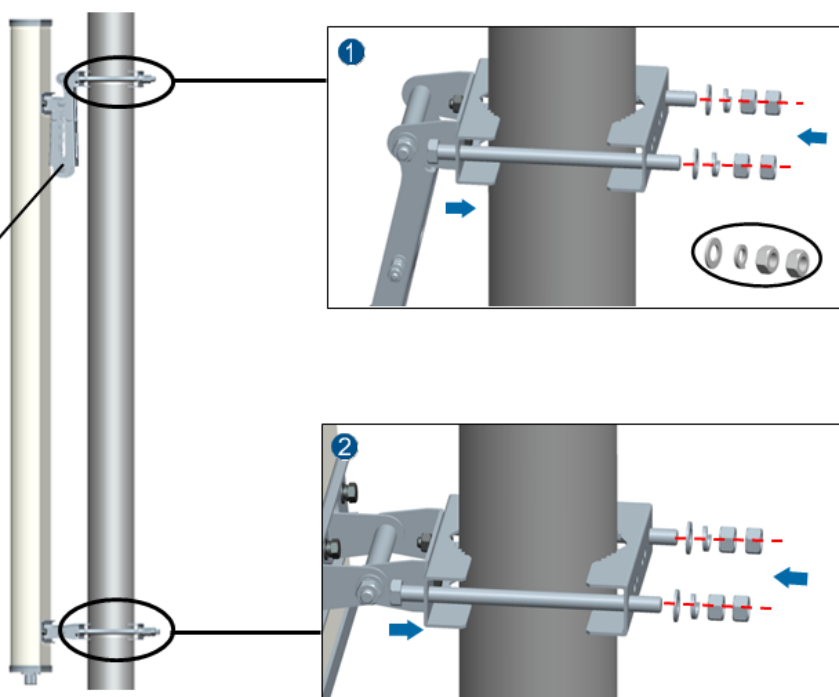


4

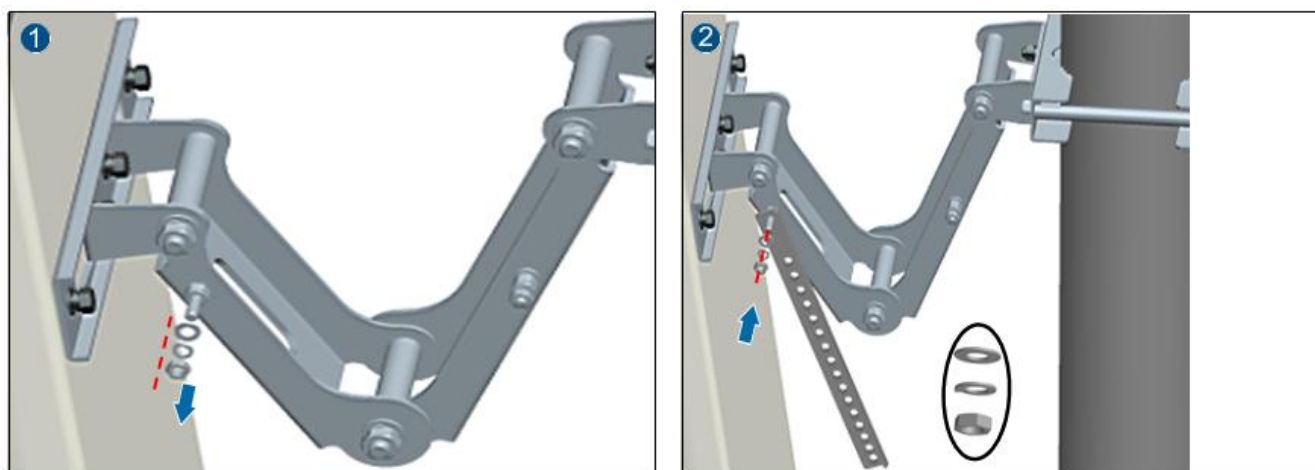


2 Install the antenna

Ensure the upper bracket is fully closed before the bolts are screwed tightly



3 Install the scale



4 Adjust the mechanical downtilt angle

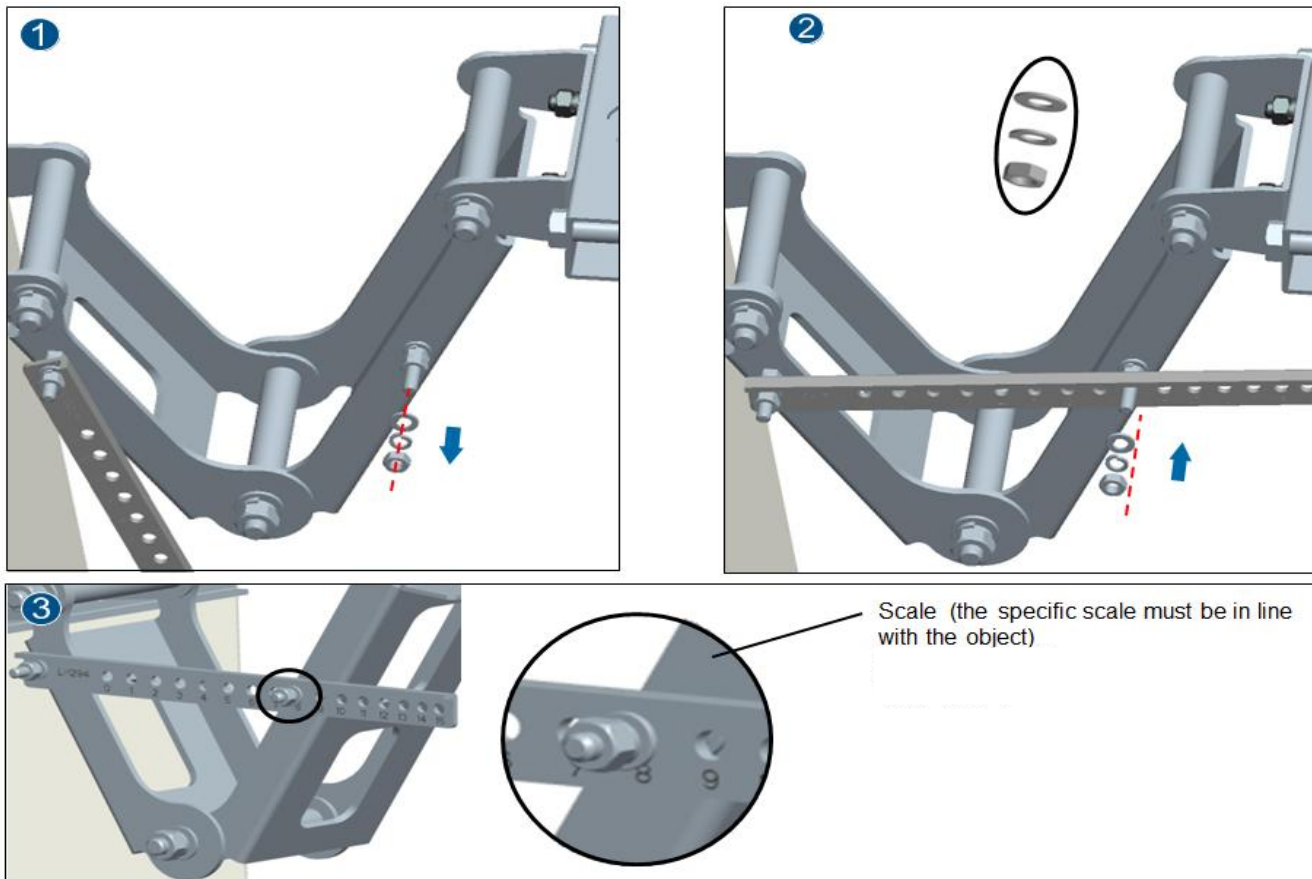


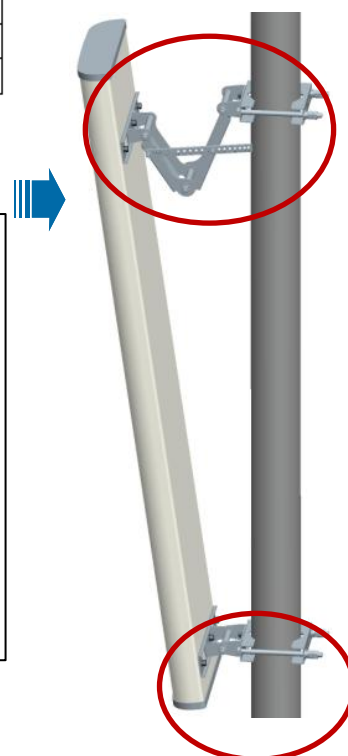
Table 1

Finally, tighten all the nuts.
Recommended torque see Table 1.

Screws size	Torque
M6	9 Nm
M8	18 Nm
M10	25 Nm

Not

1. Make sure the antenna is installed in a safe and suitable location and well clear away from high power lines.
2. Do not attempt to carry out installation when it is raining, snowing or during stormy weather .
3. Do not attempt to install the antenna on a pole of diameter other than the specified 50~115mm.
4. The Electrical Downtilt Antennas should be checked for under controlling by HCU(Hand-held Control Unit) before they been installed.



For particular installation, please contact Tongyu Communication Inc.

Antenna (50A/50AA) Installation Guide

Issue: 03



NOTE

- 1, Only qualified personnel are allowed to install the antenna.
- 2, Appearance of the actual antenna may differ from the pictures.

Installation tools



10 mm combination wrench (2 PCS)



13 mm combination wrench (2 PCS)



16 mm combination wrench (2 PCS)

Bracket subassembly



(1 PCS)



(M10 4 PCS)



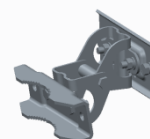
(2 PCS)



(1 PCS)

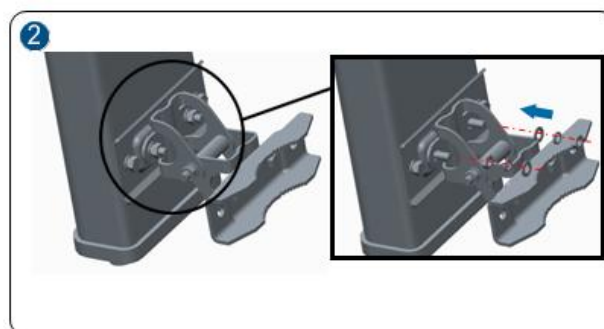
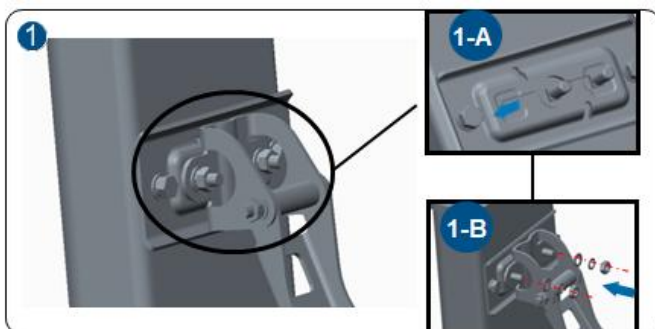


(M8 4 PCS)



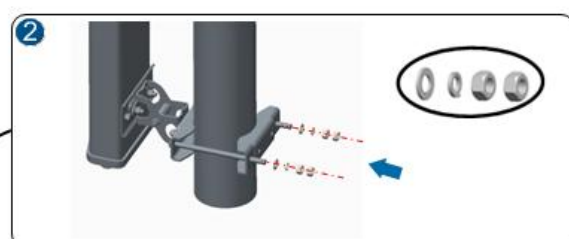
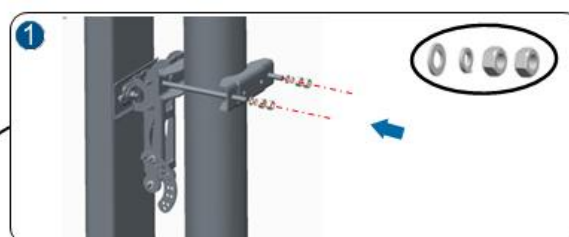
(1 PCS)

1 Install the bracket

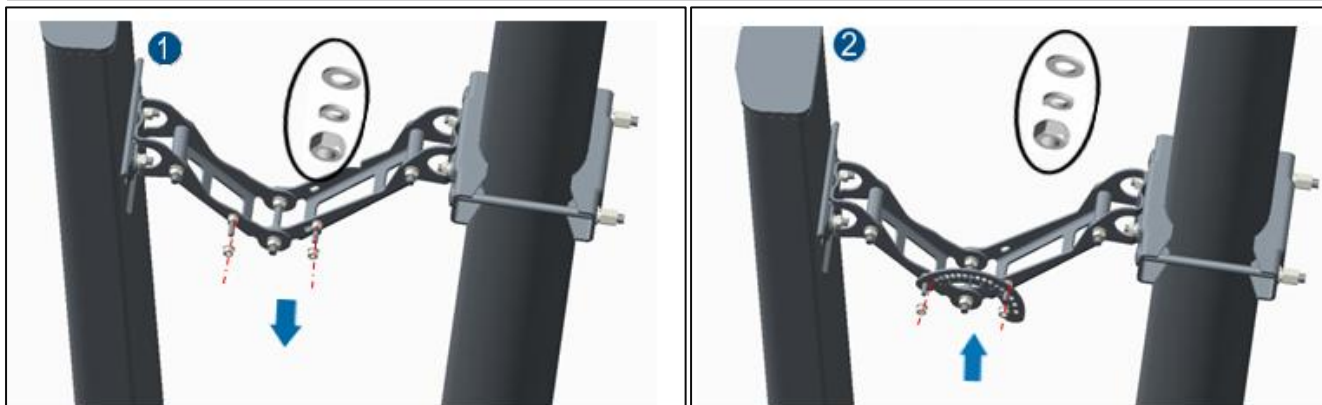


2 Install the antenna

Ensure the upper bracket is fully closed before the bolts are screwed tightly



3 Install the Scale



4 Adjust the mechanical downtilt angle

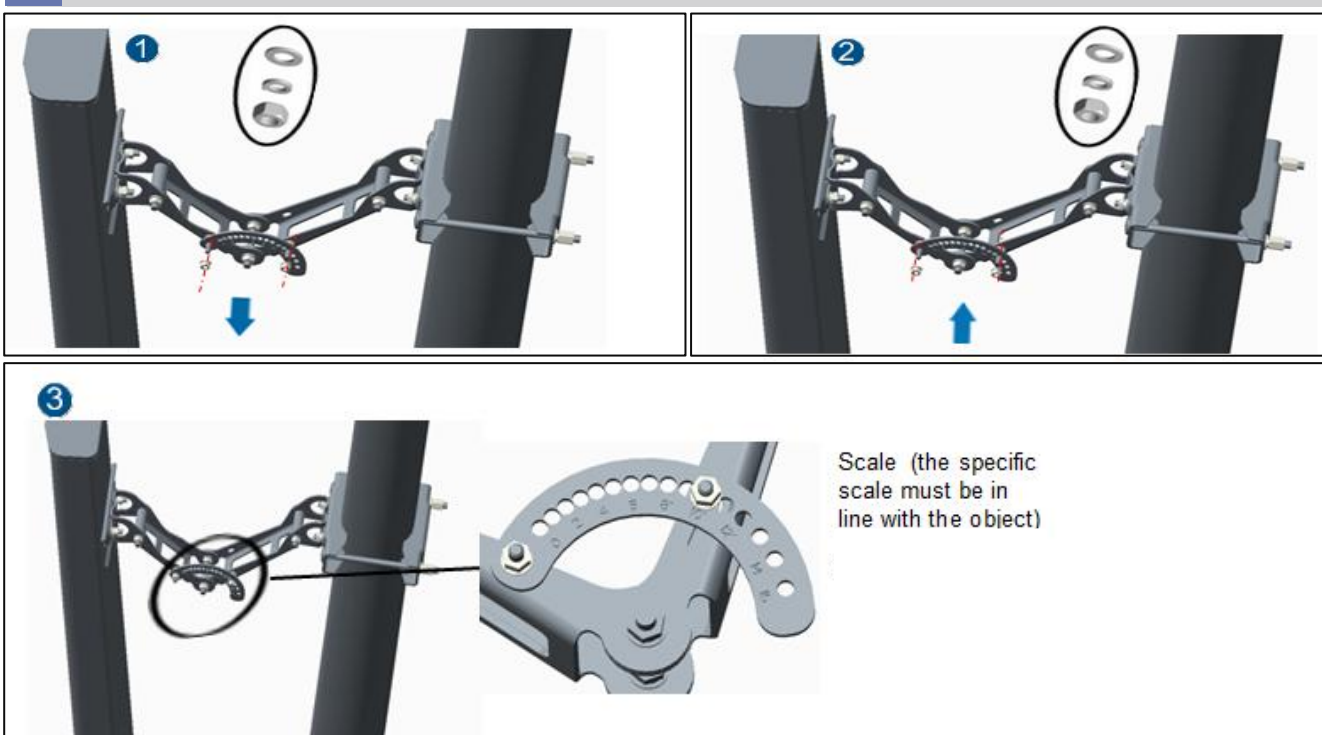


Table 1

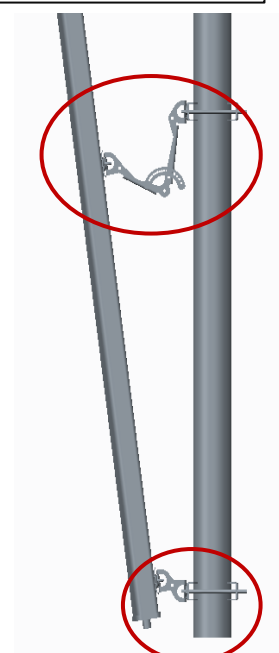
Finally, tighten all the nuts.
Recommended torque see Table 1.

Screws size	Torque
M6	9 Nm
M8	18 Nm
M10	32 Nm

Note

1. Make sure the antenna is installed in a safe and suitable location and well clear away from high power lines.
2. Do not attempt to carry out installation when it is raining, snowing or during stormy weather.
3. Do not attempt to install the antenna on a pole of diameter other than the specified 50~115mm.

For particular installation, please contact Tongyu Communication Inc.



Antenna (51A/51AA) Installation Guide



NOTE

- 1, Only qualified personnel are allowed to install the antenna.
- 2, Appearance of the actual antenna may differ from the pictures.

Installation tools



13 mm combination wrench
(2 PCS)



16 mm combination wrench
(2 PCS)

Bracket subassembly



(1 PCS)

(M8 2 PCS)



(M10 4 PCS)



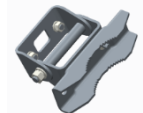
(2 PCS)



(M8 4 PCS)

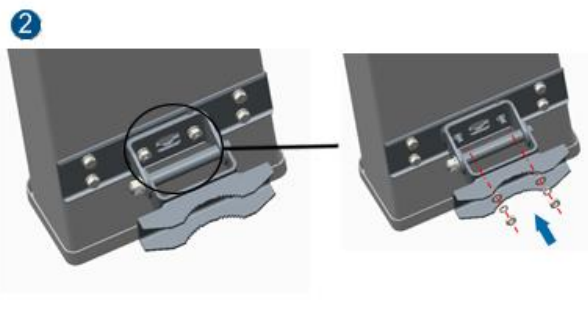
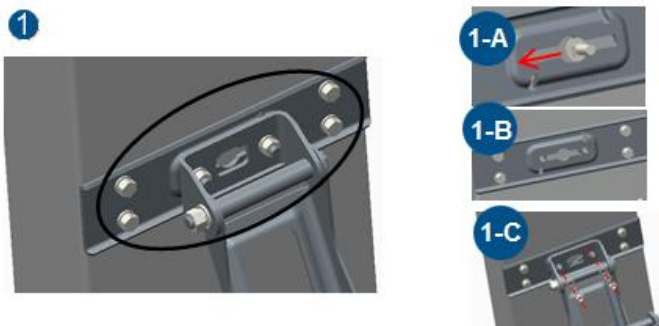


(1 PCS)



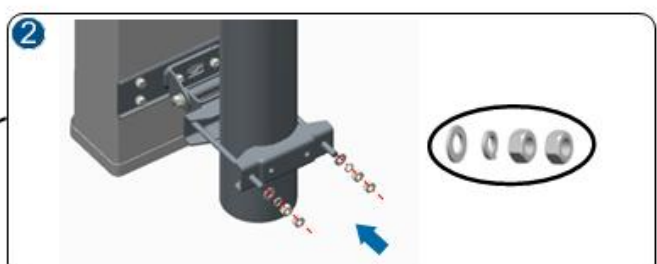
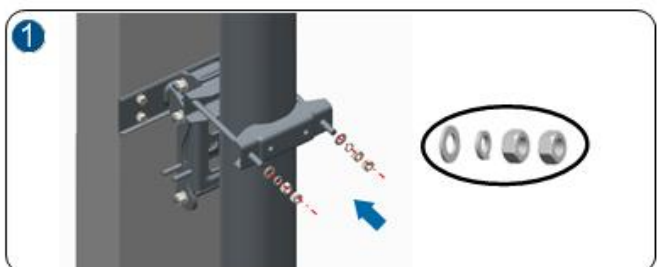
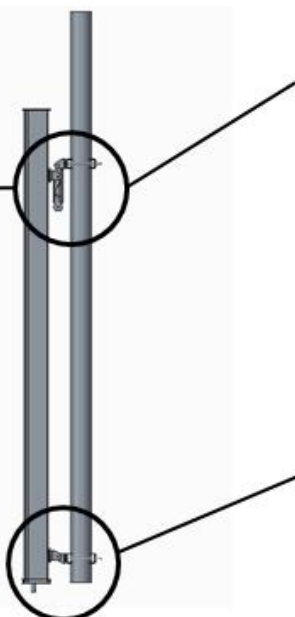
(1 PCS)

1 Install the bracket

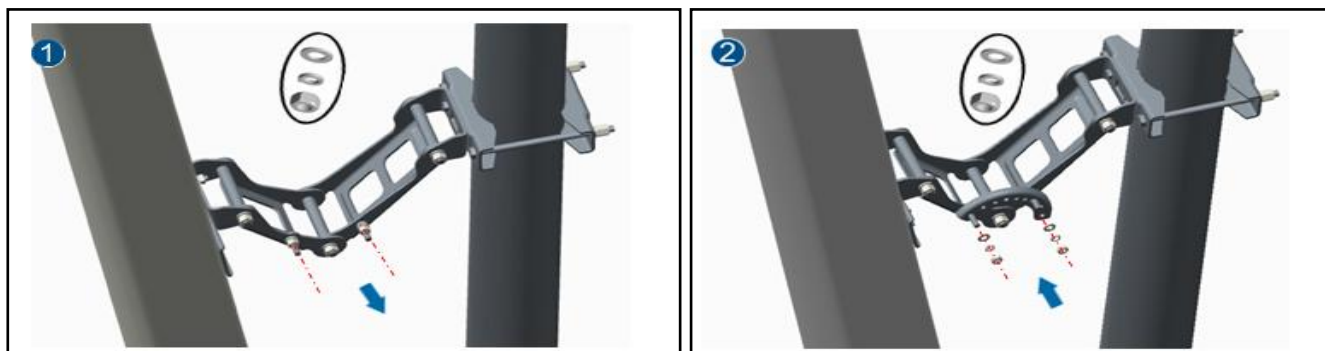


2 Install the antenna

Ensure the upper bracket is fully closed before the bolts are screwed tightly



3 Install the Scale



4 Adjust the mechanical downtilt angle

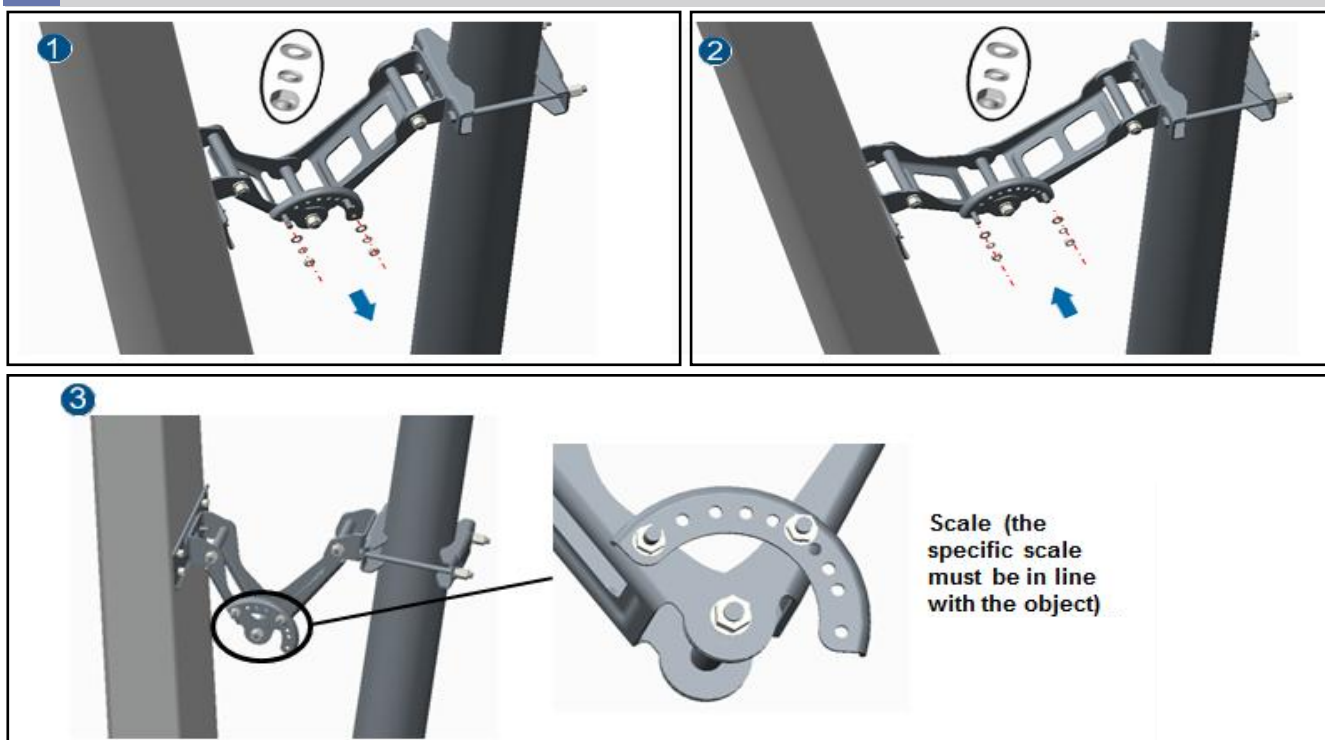


Table 1

Finally, tighten all the nuts.

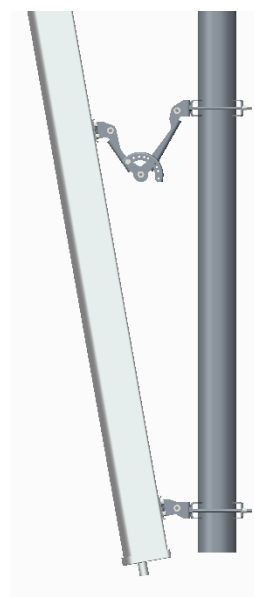
Recommended torque see Table 1.

Screws size	Torque
M8	18 Nm
M10	25 Nm

Note

1. Make sure the antenna is installed in a safe and suitable location and well clear away from high power lines.
2. Do not attempt to carry out installation when it is raining, snowing or during stormy weather.
3. Do not attempt to install the antenna on a pole of diameter other than the specified 50~115mm.
4. before they been installed.

For particular installation, please contact Tongyu Communication Inc.



Antenna (58AA) Installation Guide

Issue: 03



NOTE

- 1, Only qualified personnel are allowed to install the antenna.
- 2, Appearance of the actual antenna may differ from the pictures.

Installation tools



13 mm combination wrench
(2 PCS)



16 mm combination wrench
(2 PCS)

Bracket subassembly



(1PCS)



(1 PCS)



(1 PCS)



(2 PCS)



(1PCS)



(1PCS)



(1 PCS)



M10X180(4PCS)



M8X220(1PCS)



(M8 4 PCS)



(2PCS)

1 Install the bracket

1



1-A

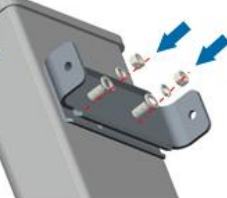


Installed on the Top

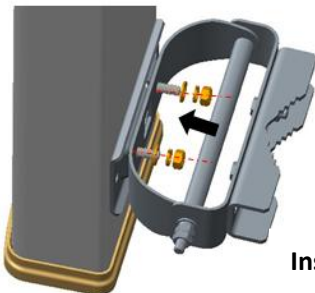
1-B



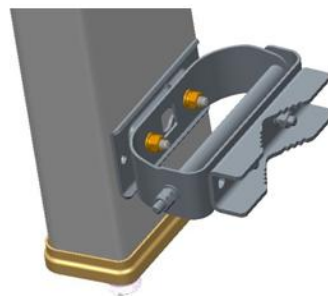
1-C



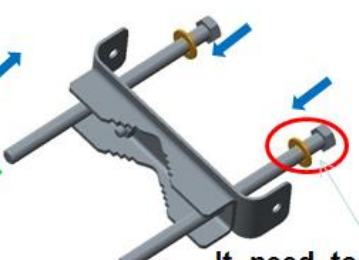
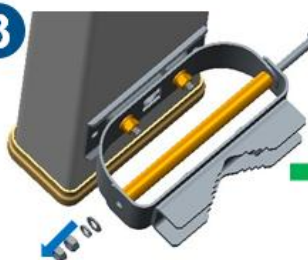
2



Installed on the bottom



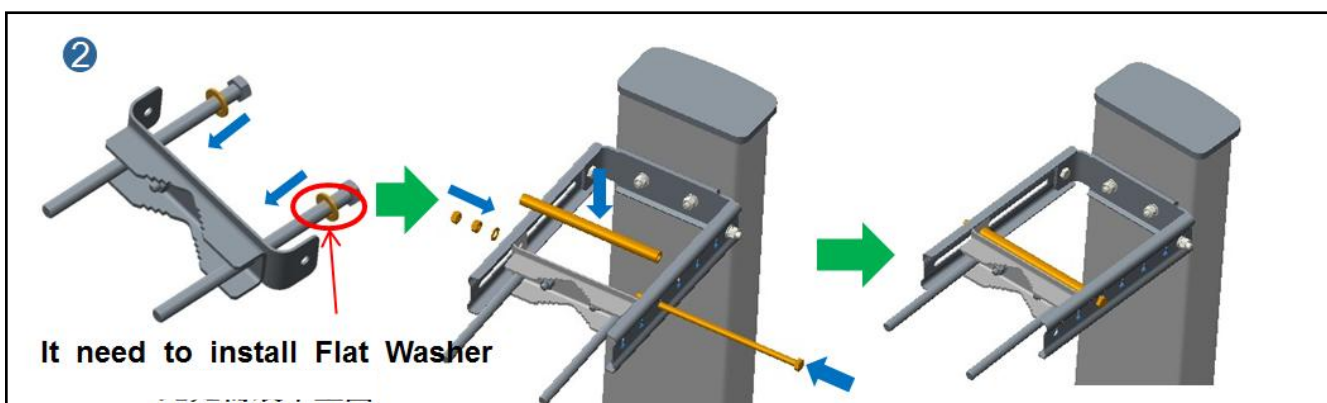
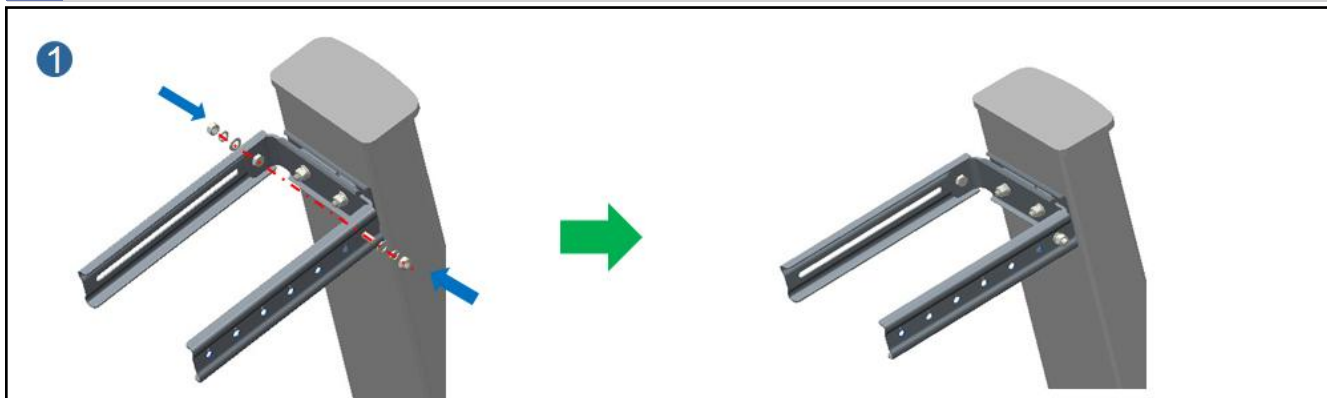
3



It need to install Flat Washer

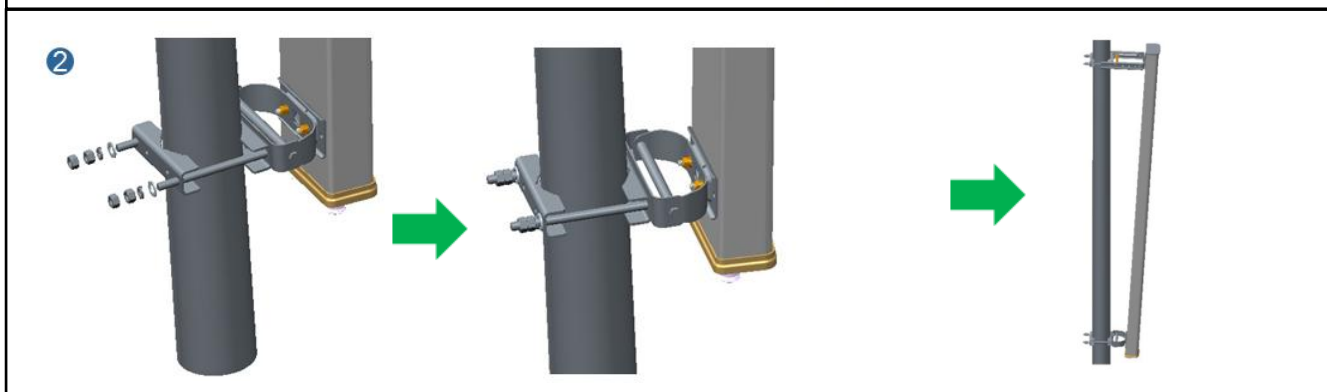
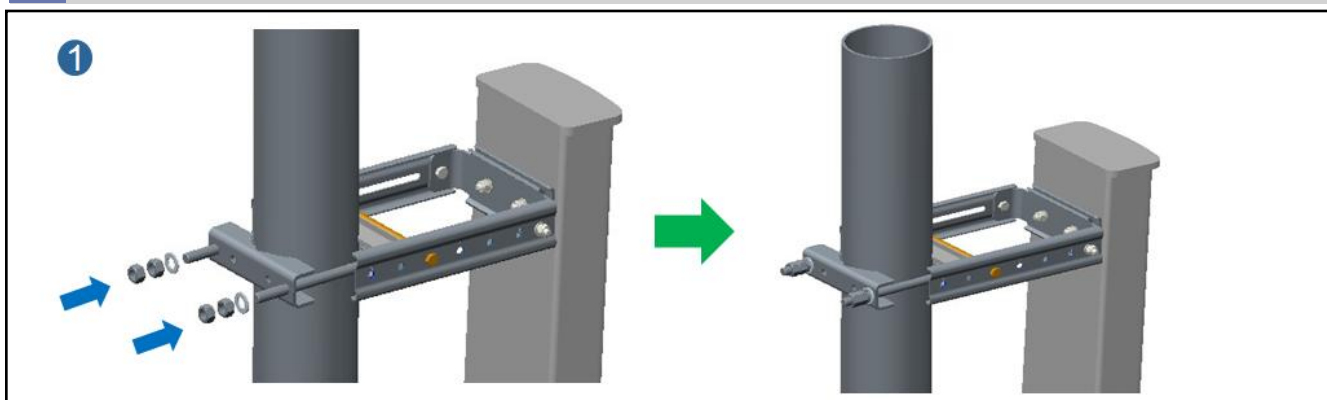


2 Install the Scale and Adjust the mechanical downtilt angle



Scale (the specific scale must be in line with the object)

3 Install the antenna



Finally, tighten all the nuts.

Recommended torque see Table 1.

Table 1

Screws size	Torque
M8	18 Nm
M10	25 Nm

Note

1. Make sure the antenna is installed in a safe and suitable location and well clear away from high power lines
2. Do not attempt to carry out installation when it is raining, snowing or during stormy weather
3. Do not attempt to install the antenna on a pole of diameter other than the specified 50~115mm
4. The Electrical Downtilt Antennas should be checked for under controlling by HCU (Hand-held Control Unit) before they been installed

For particular installation, please contact Tongyu Communication Inc.