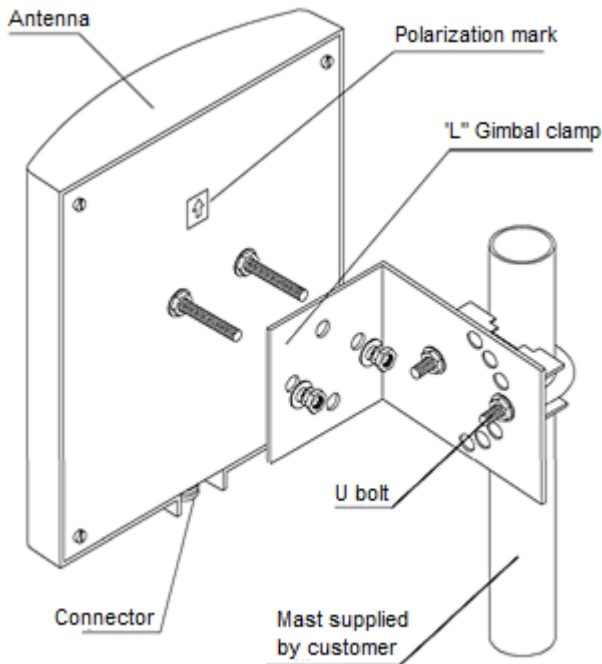


6 dBi Sturdy Outdoor Directional Panel Antenna for the 450 MHz Band

Features

- Gain: 6dBi
- Connector: N-Female
- Light Weight, Small Size
- UV Stable ABS Radome
- IP67 Protection Enclosure and Prevention of Rust
- Supplied with Down-tilt Mast Mounting Kit



Mounting hardware supplied

Model	APVT-...-0685KB
Frequency range	20 MHz wide frequency segments within the 400 - 490 MHz range
Bandwidth	20 MHz
Polarization	Vertical
Gain	6 dBi
Half-power beam width	H-plane: 85° E-plane: 120°
First upper side lobe suppression	15 dB
Front-to-back ratio	≥ 15 dB
Impedance	50 Ω
VSWR	< 2.0
Intermodulation IM3	< -150 dBc (2 x 43 dBm)
Max. power	50 W
Ground	DC Grounding

Mechanical specifications

Connector	N-female or Customized
Connector position	Bottom
Max. wind velocity	240 km/h
Operating temperature	-40° to +60° C (-40° to +140° F)
Water Proofing	IP67
Mount way	Pole Mount
Suitable pole diameter	Ø40 – Ø50 mm
Radome material and color	Fiberglass / Gray
Antenna size	240 x 230 x 50 mm (9.5 x 9 x 2 in)
Packing size	340 x 280 x 90 mm (13.4x11x3.5 in)
Weight	0.96 kg (2.1 in)
Bracket Weight	0.60 kg (1.4 in)

Note.

When ordering, specify the frequency range with a bandwidth of 20 MHz.

Ordering Designations

Model	Frequency
APVT-400420-0685KB	400 - 420 MHz
APVT-410430-0685KB	410 - 430 MHz
APVT-420440-0685KB	420 - 440 MHz
APVT-425445-0685KB	425 - 445 MHz
APVT-440460-0685KB	440 - 460 MHz
APVT-450470-0685KB	450 - 470 MHz
APVT-460480-0685KB	460 - 480 MHz
APVT-470490-0685KB	470 - 490 MHz

Available accessories: Power splitters

Ice protection: Due to the very sturdy antenna construction and the protection of the radiating system by the radome, the antenna remains operational even under icy conditions.

Grounding: All metal parts of the antenna including the mounting kit and the inner conductor are DC grounded.