



Specifications

Model	AC-440470-3.5-100
Frequency Range	440-470 MHz
Gain	3,5 dBi
Impedance	50 ohms
VSWR	< 1.5:1
Polarization	Vertical
Max. input power	100 W
H-plane beamwidth	360° (Omni)
E-plane beamwidth	58°
Connector	N female
Height	600 mm
Radome diameter	70 mm
Weight	1.63 kg (without bracket)
Rated Wind Velocity	216 km/h
Radome	Fiberglass
Mounting	On 40-70 mm dia. mast tube
Operating Temperature	-40°C to +70°C
Ingress Protection	IP66

Applications

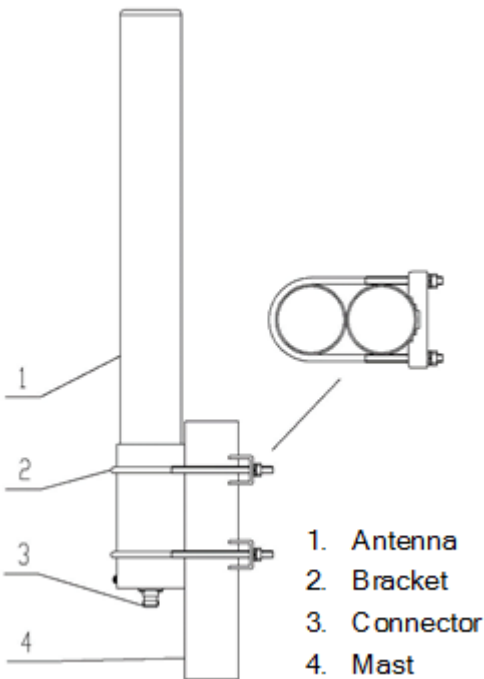
- 450 MHz Band
- Wireless access system
- Trunking communications
- Signal coverage
- Network optimized

Features

- Broadband Design
- Simple Structure,Good performance
- Good environmental adaptability
- Outdoor used

The exceptional mechanical capabilities of this antenna ensures long dependable service in all environments.

Mounting Mounting hardware supplied.



Order Information:

AC-440470-3.5-100 Antenna 440-470 MHz, 3.5 dBi, 100W with N-female connector