

RADWIN JET, JET DUO Model

Sector Base Station - Data Sheet (RW5000/HBS/5PG5/F5F5/UNI/JET-DUO/INT)



RW-5PG5-9655

Product Description

RW-5PG5-9655 is a sector Base Station radio unit (HBS) that includes two radios at 5 GHz band in a single unit. The unit provides up to 1.5 Gbps net aggregate throughput.

RW-5PG5-9655 includes separate smart beamforming antenna for each carrier. It also includes an embedded GPS unit.

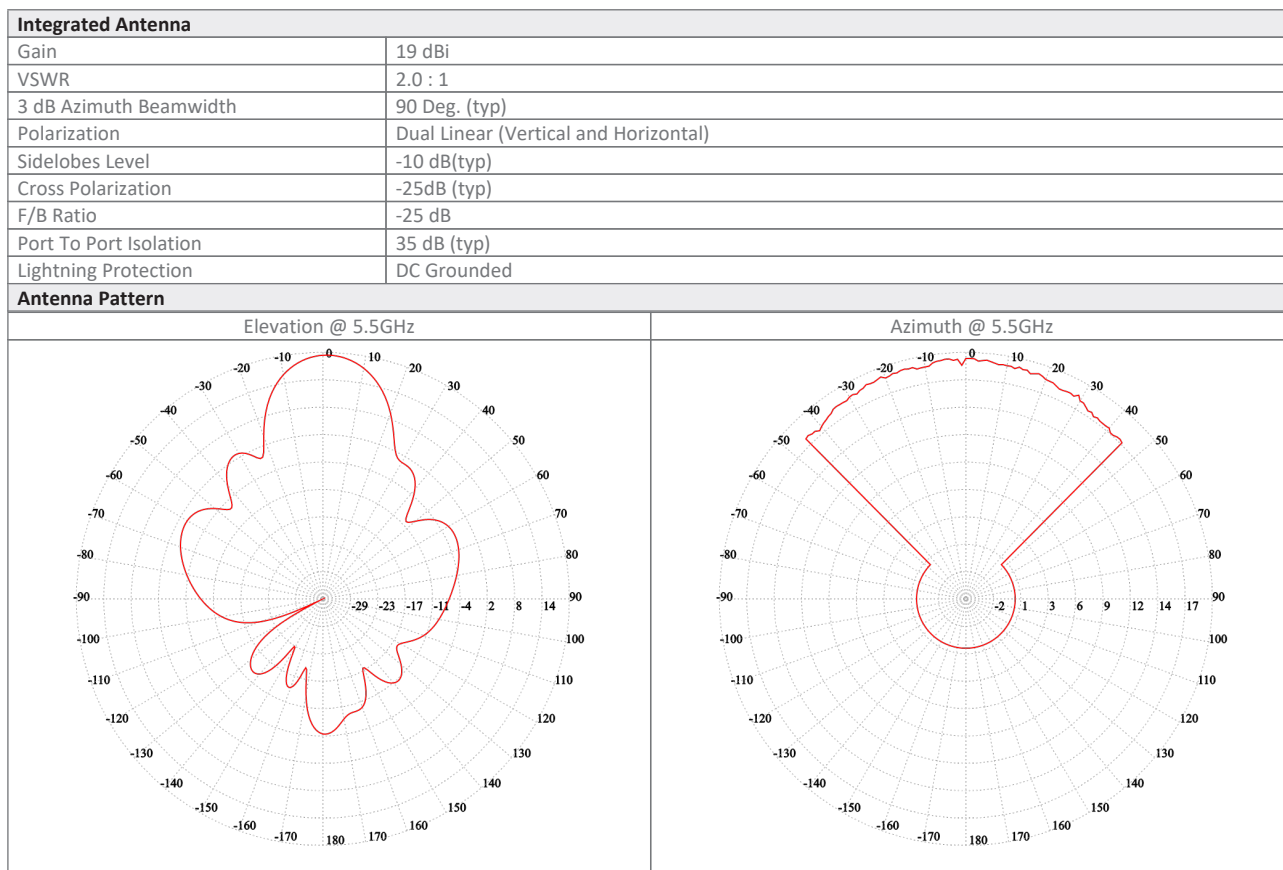
RW-5PG5-9655 supports 4.9 to 5.9 GHz.

Product Highlights

- Dual carriers base station radio with smart beamforming antennas supporting 5 GHz bands
- Up to 1.5 Gbps (2 x 750 Mbps) net aggregated throughput
- Long range - Up to 40 km / 25 miles
- CIR or Best-Effort per SU
- Built-in GPS
- Gigabit WAN connectivity (SFP / PoE)
- Advanced MIMO, OFDM and Diversity technologies
- Dynamic Channel Bandwidth Selection
- Robust and reliable operation in harsh environments
- Ease of operation

Product Specifications:

Configuration					
Architecture	Outdoor Unit with a smart beamforming integrated antenna with embedded GPS				
PoE to ODU Interface	Outdoor CAT-5e; Maximum cable length: 100m for 10/100BaseT and 75m for 1000BaseT				
Data Interfaces	10/100/1000 Mbps RJ45 PoE or 1Gbps SFP				
Radio					
Max Capacity	1.5 Gbps net aggregate throughput				
Subscriber Units support	Up to 128 subscriber units (Applicable from release 5.0.70)				
Range	Up to 40 km / 25 miles *				
Channel Bandwidth	Configurable: 10, 20, 40, 80 MHz (for the default band); Dynamic Channel BW selection (20/40/80 MHz)				
Modulation	MIMO-OFDM (BPSK/QPSK/16QAM/64QAM/256QAM)				
Adaptive Modulation & Coding	Supported				
Smart Bandwidth Management (DBA)	Supported				
DFS	Not Supported				
Diversity	Supported				
Max Tx Power	25 dBm per chain				
Duplex Technology	TDD				
Error Correction	FEC k = 1/2, 2/3, 3/4, 5/6				
Encryption	AES 128				
Support Indoor units	RADWIN AC PoE devices (9921-104X), DC PoE device (9921-1049)				
Uplink / Downlink Allocation	Configurable: Symmetric or Asymmetric				
End to End Latency	Typical: 3.5msec @ 2 SUs; 20msec @ 128 HSUs				
Layer 2	Bridging learning of 5K MAC addresses				
QoS	Packet classification to 4 priority queues according to 802.1P or Diffserv				
VLAN Support	802.1Q, QinQ, 4094 VLANs				
TDD Intra Site Synchronization	Supported via GPS receiver				
TDD Inter Site Synchronization	Supported via GPS receiver				
ODU Management	IPv4/IPv6 dual-stack; SNMPv1, SNMPv3; HTTP/HTTPS using web browser				
802.1x	Supported				
Option 82	Supported				
Non PPPoE filtering	Supported				
DHCP Filter	Supported				
IGMP snooping	Support in future releases				
Nomadic subscribers	Supported				
RADIUS Authorization	Supported				
RADIUS User authentication	Supported				
Syslog	Supported				
Supported Bands					
Band	CBW 10MHz [GHz]	CBW 20MHz [GHz]	CBW 40MHz [GHz]	CBW 80MHz [GHz]	Radio Compliance
5.4 GHz Universal (default)	5.470-5.725	5.465-5.730	5.455-5.740	5.455-5.760	Universal
5.8 GHz FCC/IC	5.730-5.845	5.730-5.845	5.730-5.845	5.730-5.845	FCC 47CFR Part 15.407; ISSED RSS-247
5.8 GHz Universal	5.725-5.850	5.725-5.850	5.725-5.850	5.725-5.850	Universal
4.9 GHz Universal	4.900-4.995	4.900-4.995	4.900-4.995	4.900-4.995	Universal
5.9 GHz Universal	5.725-5.955	5.720-5.960	5.710-5.970	5.710-5.990	Universal
5.1 GHz Universal	5.145-5.340	5.140-5.345	5.130-5.355	5.130-5.375	Universal
5.1 GHz UBR	5.125-5.880	5.125-5.880	5.125-5.880	5.125-5.880	Universal
Mechanical					
ODU Dimensions	35.6(w) x 37.1(h) x 11.0(d) cm				
ODU Weight	4.89 kg / 10.78 lbs				
Power					
Power Feeding	Power provided over ODU-IDU cable				
Power Consumption	<50W				
Environmental					
Operating Temperatures	-35°C to 60°C / -31°F to 140°F				
Humidity	100% condensing, IP67 (totally protected against dust and against immersion in water up to 1m)				
Safety					
EU/Intl	EN/IEC 62368-1, EN/IEC 60950-22				
USA	cTUVus: UL 60950-1, UL 60950-22				
EMC					
FCC	FCC 47 CFR, Part15, Subpart B, Class B				
ETSI	ETSI EN 301 489-1, ETSI EN 301 489-4, ETSI 301 489-17				
Canada	ICES-003, CISPR 32, Class B				
AS/NZS	CISPR 32, Class B				



Ordering Info

Part Number: RW-5PG5-9655

Description: RADWIN JET DUO ODU, with a smart beamforming integrated antenna with embedded GPS, supporting multi frequency bands at 5.x GHz, factory default 5.4 GHz Universal.

* May be limited by regulation in the specific band being used

Datasheet information can be changed by manufacturer without prior notice