

COLLINEAR ANTENNAS

Telewave **COOL BLUE™** fiberglass collinear antennas are an industry standard. These antennas are specified by system designers who require their unique combination of wide bandwidth, high performance, gain flexibility, and rugged durability in all environmental conditions.

All Telewave collinear antennas handle 500 watts minimum input power, and are available in eight major frequency bands between 118-965 MHz, with gain from 0 to 10 dBd. Horizontal patterns are omnidirectional, and vertical beamwidth ranges from 7 to 42 degrees depending on gain and frequency.

The Telewave collinear design does not require external ground plane radials, eliminating a major source of failure and RF intermodulation. These antennas are constructed with brass and copper elements, connected at DC ground potential for lightning impulse protection, including a solid copper or brass top cap. All junctions are fully soldered to prevent intermodulation. A heavy-duty 2.75" support pipe made of 6061-T6 aluminum is permanently bonded to an exceptionally strong radome, ensuring years of trouble-free performance.

The **COOL BLUE™** interwoven fiberglass radome provides maximum protection from corrosive gases, ultraviolet radiation, icing, salt spray, acid rain, and wind blown abrasives. Wind-load ratings are up to 200 MPH with no ice, and the flexibility of the radome (F6/8/10 models) allows enough antenna motion to resist normal icing, without affecting the pattern. The special radome color helps the antenna blend into the skyline, and absorbs solar radiation to accelerate de-icing.

The standard connector type is a recessed N-female, attached inside the base of the support pipe. A 24" coax jumper is included to simplify installations using hard-line cable. For higher power applications, a 7-16 DIN-F connector can be installed as an option. One set of heavy-duty mounting clamps is included with each antenna.



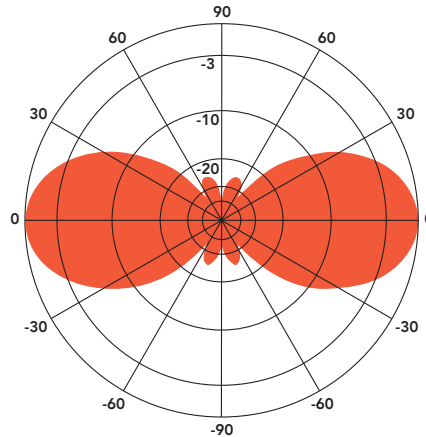
ANT125F2

FIBERGLASS COLLINEAR ANTENNA 2.5 dBd

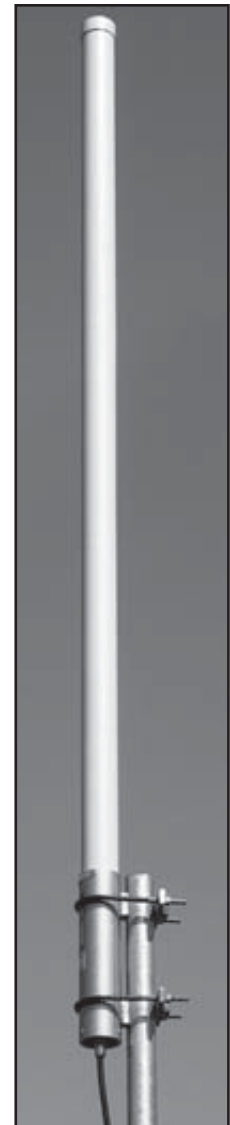
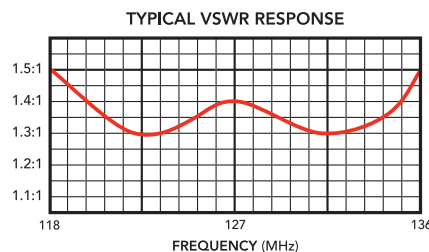
The Telewave ANT125F2 is an extremely rugged collinear antenna, with moderate gain and wide vertical beamwidth. This compact antenna produces 2.5 dBd gain, and is designed for operation in all environmental conditions. The antenna is constructed with brass and copper elements, with a path to DC ground for lightning impulse protection.

All junctions are fully soldered to prevent RF intermodulation, and each antenna is completely protected within a rugged, high-tech radome to ensure survivability in the worst environments. The "Cool Blue" radome provides maximum protection from corrosive gases, ultraviolet radiation, icing, salt spray, acid rain, and wind blown abrasives.

The ANT125F2 includes the ANTC485 dual clamp set for mounting to a 1.5" to 3" O.D. support pipe, and a 24" removable RG-213 N-Male jumper.



ANT125F2 - 127 MHz
Vertical Plane
Gain = 2.56 dBd



COLLINEAR

SPECIFICATIONS

Frequency (continuous)	118-136 MHz	Dimensions (L x base diam.) in.	77 x 2.75
Gain	2.5 dBd	Tower weight (antenna + clamps)	16 lb.
Power rating (typ.)	500 watts	Shipping weight	20 lb.
Impedance	50 ohms	Wind rating / with 0.5" ice	200 / 150 MPH
VSWR	1.5:1 or less	Maximum exposed area	1.6 ft. ²
Pattern	Omnidirectional	Lateral thrust at 100 MPH	62 lb.
Vertical beamwidth	38°	Bending moment at top clamp	117 ft. lb.
Termination	Recessed N Female 7-16 DIN-F opt.	(100 MPH, 40 PSF flat plate equiv.)	

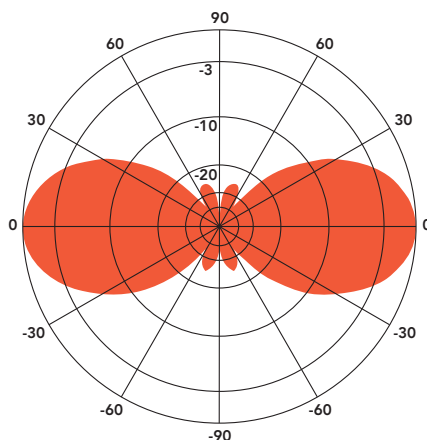
ANT135F2

FIBERGLASS COLLINEAR ANTENNA 2.5 dBd

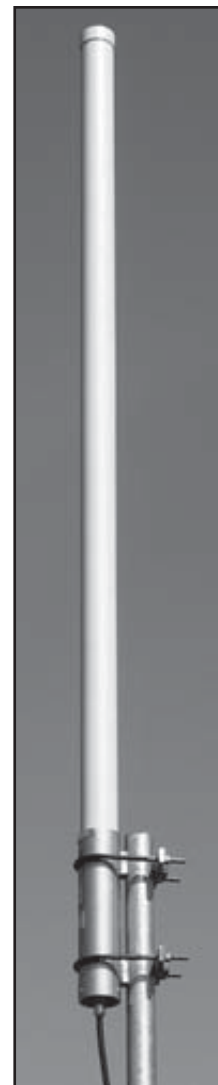
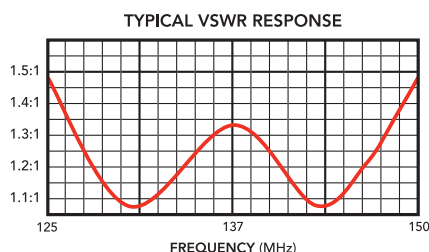
The Telewave ANT135F2 is an extremely rugged collinear antenna, with moderate gain and wide vertical beamwidth. This compact antenna produces 2.5 dBd gain, and is designed for operation in all environmental conditions. The antenna is constructed with brass and copper elements, with a path to DC ground for lightning impulse protection.

All junctions are fully soldered to prevent RF intermodulation, and each antenna is completely protected within a rugged, high-tech radome to ensure survivability in the worst environments. The "Cool Blue" radome provides maximum protection from corrosive gases, ultraviolet radiation, icing, salt spray, acid rain, and wind blown abrasives.

The ANT135F2 includes the ANTC485 dual clamp set for mounting to a 1.5" to 3" O.D. support pipe, and a 24" removable RG-213 N-Male jumper.



ANT135F2 - 137 MHz
Vertical Plane
Gain = 2.53 dBd



SPECIFICATIONS

Frequency (continuous)	125-150 MHz	Dimensions (L x base diam.) in.	72 x 2.75
Gain	2.5 dBd	Tower weight (antenna + clamps)	15 lb.
Power rating (typ.)	500 watts	Shipping weight	19 lb.
Impedance	50 ohms	Wind rating / with 0.5" ice	200 / 150 MPH
VSWR	1.5:1 or less	Maximum exposed area	1.5 ft. ²
Pattern	Omnidirectional	Lateral thrust at 100 MPH	59 lb.
Vertical beamwidth	38°	Bending moment at top clamp	101 ft. lb.
Termination	Recessed N Female 7-16 DIN-F opt.	(100 MPH, 40 PSF flat plate equiv.)	

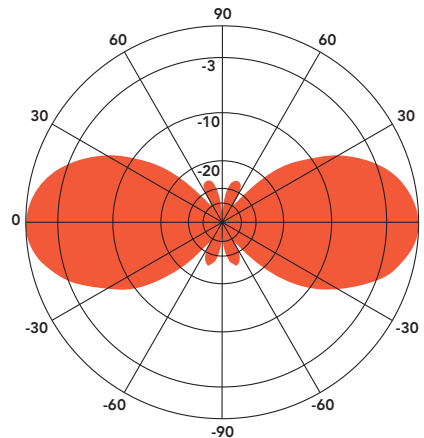
ANT140F2

FIBERGLASS COLLINEAR ANTENNA 2.5 dBd

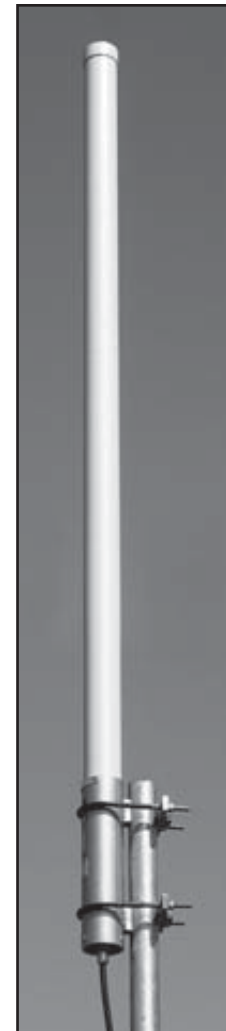
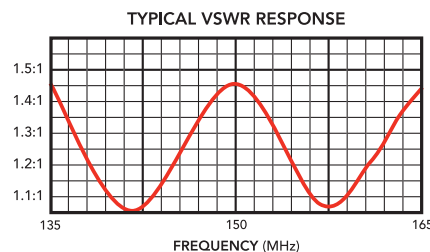
The Telewave ANT140F2 is an extremely rugged collinear antenna, with moderate gain and wide vertical beamwidth. This compact antenna produces 2.5 dBd gain, and is designed for operation in all environmental conditions. The antenna is constructed with brass and copper elements, with a path to DC ground potential for lightning impulse protection.

All junctions are fully soldered to prevent RF intermodulation, and each antenna is completely protected within a rugged, high-tech radome to ensure survivability in the worst environments. The "Cool Blue" radome provides maximum protection from corrosive gases, ultraviolet radiation, icing, salt spray, acid rain, and wind blown abrasives.

The ANT140F2 includes the ANTC485 dual clamp set for mounting to a 1.5" to 3" O.D. support pipe, and a 24" removable RG-213 N-Male jumper.



ANT140F2 - 150 MHz
Vertical Plane
Gain = 2.51 dBd



COLLINEAR

SPECIFICATIONS

Frequency (continuous)	135-165 MHz	Dimensions (L x base diam.) in.	66 x 2.75
Gain	2.5 dBd	Tower weight (antenna + clamps)	13 lb.
Power rating (typ.)	500 watts	Shipping weight	17 lb.
Impedance	50 ohms	Wind rating / with 0.5" ice	200 / 150 MPH
VSWR	1.5:1 or less	Maximum exposed area	1.4 ft. ²
Pattern	Omnidirectional	Lateral thrust at 100 MPH	55 lb.
Vertical beamwidth	38°	Bending moment at top clamp	83 ft. lb.
Termination	Recessed N Female 7-16 DIN-F opt.	(100 MPH, 40 PSF flat plate equiv.)	

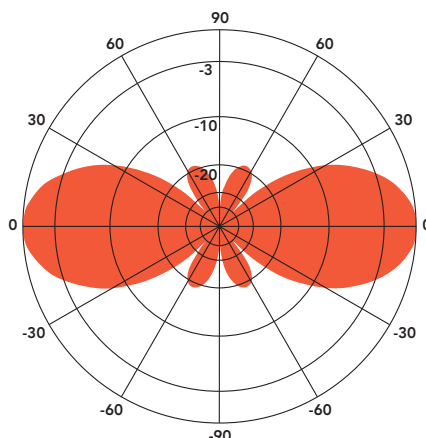
ANT150F2

FIBERGLASS COLLINEAR ANTENNA 2.5 dBd

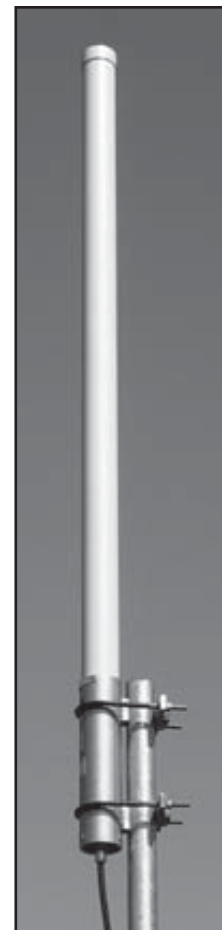
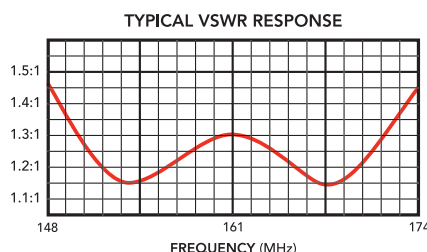
The Telewave ANT150F2 is an extremely rugged collinear antenna, with moderate gain and wide vertical beamwidth. This compact antenna produces 2.5 dBd gain, and is designed for operation in all environmental conditions. The antenna is constructed with brass and copper elements, with a path to DC ground for lightning impulse protection.

All junctions are fully soldered to prevent RF intermodulation, and each antenna is completely protected within a rugged, high-tech radome to ensure survivability in the worst environments. The "Cool Blue" radome provides maximum protection from corrosive gases, ultraviolet radiation, icing, salt spray, acid rain, and wind blown abrasives.

The ANT150F2 includes the ANTC485 dual clamp set for mounting to a 1.5" to 3" O.D. support pipe, and a 24" removable RG-213 N-Male jumper.



ANT150F2 156 MHz
Vertical Plane
Gain = 2.55 dBd



SPECIFICATIONS

Frequency (continuous)	148-174 MHz	Dimensions (L x base diam.) in.	60 x 2.75
Gain	2.5 dBd	Tower weight (antenna + clamps)	12 lb.
Power rating (typ.)	500 watts	Shipping weight	16 lb.
Impedance	50 ohms	Wind rating / with 0.5" ice	200 / 150 MPH
VSWR	1.5:1 or less	Maximum exposed area	1.3 ft. ²
Pattern	Omnidirectional	Lateral thrust at 100 MPH	50 lb.
Vertical beamwidth	38°	Bending moment at top clamp	67 ft. lb.
Termination	Recessed N Female 7-16 DIN-F opt.	(100 MPH, 40 PSF flat plate equiv.)	

ANT150F6

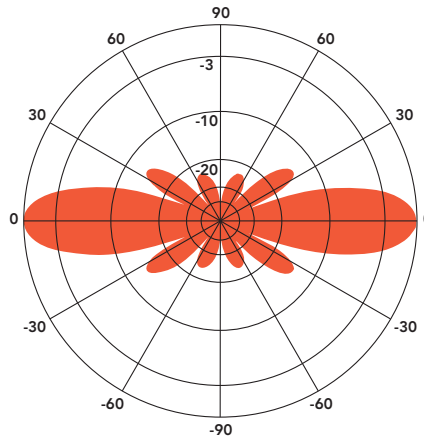
FIBERGLASS COLLINEAR ANTENNA 6 dBd

The Telewave ANT150F6 is an extremely rugged, medium-gain, fiberglass collinear antenna, designed for operation in all environmental conditions. The antenna is constructed with brass and copper elements, connected at DC ground potential for lightning impulse protection. All junctions are fully soldered to prevent RF intermodulation, and each antenna is completely protected within a high-tech, flexible radome to ensure survivability in the worst environments.

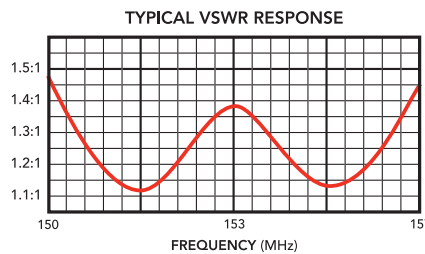
The "Cool Blue" radome provides maximum protection from corrosive gases, UV radiation, icing, salt spray, acid rain, and wind blown abrasives. Eight models cover the entire VHF band. Please specify exact frequency and band code (-1, -2, etc.) when ordering.

The ANT150F6 includes an ANT482 dual clamp set for mounting to a 1.5" to 3.5" O.D. support pipe, and a 24" removable RG-213 N-Male jumper. Stand-off and top mounts are also available.

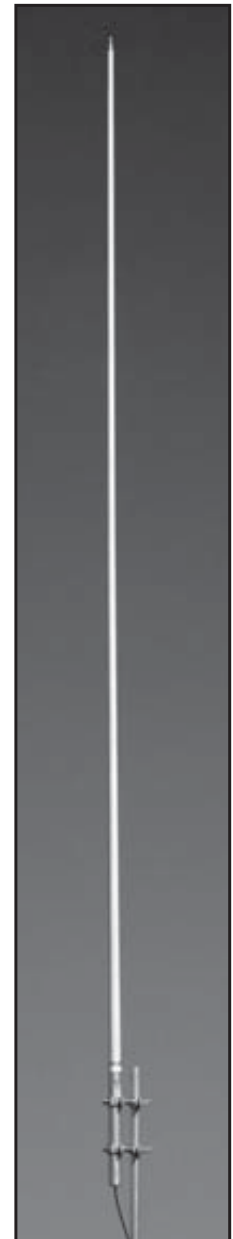
NOTE: THESE ANTENNAS ARE SHIPPED VIA TRUCK FREIGHT ONLY



ANT150F6 - 156 MHz
Vertical Plane
Gain = 6.41 dBd



FREQUENCY RANGES	
ANT150F6-1	138 - 144 MHz
ANT150F6-2	144 - 151 MHz
ANT150F6-3	150 - 157 MHz
ANT150F6-4	156 - 164 MHz
ANT150F6-5	158 - 166 MHz
ANT150F6-6	161 - 168 MHz
ANT150F6-7	167 - 172.5 MHz
ANT150F6-8	171 - 175 MHz



SPECIFICATIONS		138-151 MHz	150-175 MHz
Frequency range	138-175 MHz (8 bands)	Dimensions (L x base diam.)	256" x 2.75" 244" x 2.75"
Gain	6 dBd	Tower weight (Antenna + clamps)	43 lb. 41 lb.
Power rating (typ.)	500 watts	Shipping weight	65 lb. 62 lb.
Impedance	50 ohms	Wind rating / 0.5" ice	150 / 125 MPH
VSWR	1.5:1 or less	Maximum exposed area	4.05 ft. ² 3.97 ft. ²
Pattern	Omnidirectional	Lateral Thrust at 100 MPH	162 lb. 159 lb.
Vertical beamwidth	20°	Bending Moment - top clamp (100 MPH, 40 PSF flat plate equiv.)	1090 ft. lb. 1010 ft. lb.
Termination	Recessed N Female 7-16 DIN-F opt.		

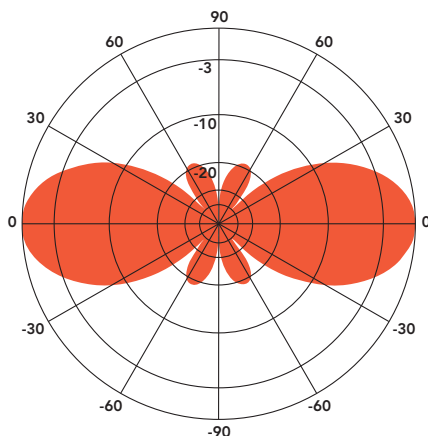
ANT195F2

FIBERGLASS COLLINEAR ANTENNA 2.5 dBd

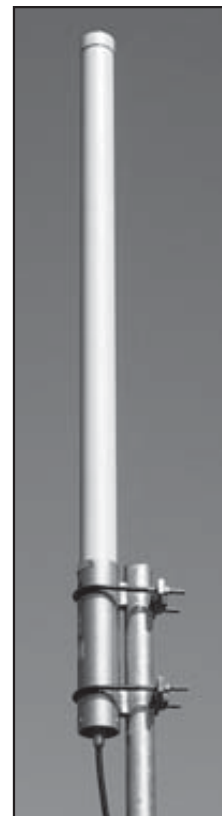
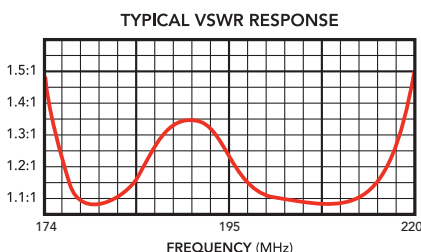
The Telewave ANT195F2 is an extremely rugged collinear antenna, with moderate gain and wide vertical beamwidth. This compact antenna produces 2.5 dBd gain, and is designed for operation in all environmental conditions. The antenna is constructed with brass and copper elements, with a path to ground potential for lightning impulse protection. The ANT195F2 is an excellent choice for SCADA or other whitespace applications, and DTV translators.

All junctions are fully soldered to prevent RF intermodulation, and each antenna is completely protected within a rugged, high-tech radome to ensure survivability in the worst environments. The "Cool Blue" radome provides maximum protection from corrosive gases, ultraviolet radiation, icing, salt spray, acid rain, and wind blown abrasives.

The ANT195F2 includes the ANTC485 dual clamp set for mounting to a 1.5" to 3" O.D. support pipe, and a 24" removable RG-213 N-Male jumper.



ANT195F2 - 195 MHz
Vertical Plane
Gain = 2.52 dBd



SPECIFICATIONS

Frequency (continuous)	174-216 MHz	Dimensions (L x base diam.) in.	53 x 2.75
Gain	2.5 dBd	Tower weight (antenna + clamps)	11 lb.
Power rating (typ.)	500 watts	Shipping weight	15 lb.
Impedance	50 ohms	Wind rating / with 0.5" ice	200 / 150 MPH
VSWR	1.5:1 or less	Maximum exposed area	1.2 ft. ²
Pattern	Omnidirectional	Lateral thrust at 100 MPH	46 lb.
Vertical beamwidth	38°	Bending moment at top clamp	54 ft. lb.
Termination	Recessed N Female 7-16 DIN-F opt.	(100 MPH, 40 PSF flat plate equiv.)	

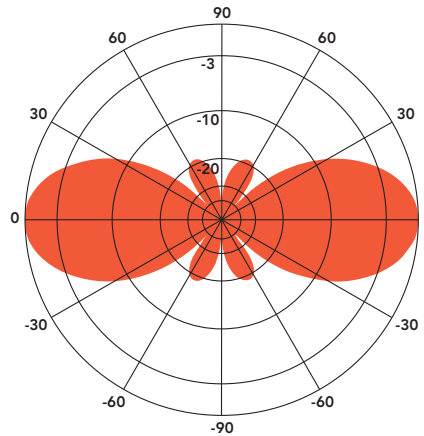
ANT220F2

FIBERGLASS COLLINEAR ANTENNA 2.5 dBd

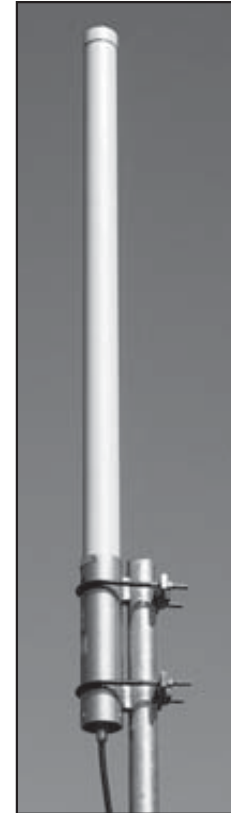
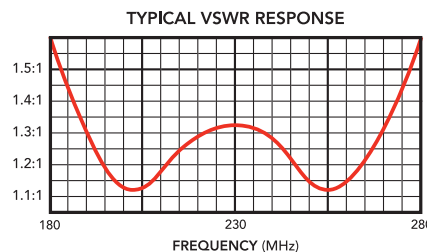
The Telewave ANT220F2 is an extremely rugged collinear antenna, with moderate gain and wide vertical beamwidth. This compact antenna produces 2.5 dBd gain, and is designed for operation in all environmental conditions. The antenna is constructed with brass and copper elements, with a path to ground potential for lightning impulse protection. The ANT220F2 is an excellent choice for wireless PTC systems in urban or rural areas.

All junctions are fully soldered to prevent RF intermodulation, and each antenna is completely protected within a rugged, high-tech radome to ensure survivability in the worst environments. The "Cool Blue" radome provides maximum protection from corrosive gases, ultraviolet radiation, icing, salt spray, acid rain, and wind blown abrasives.

The ANT220F2 includes the ANTC485 dual clamp set for mounting to a 1.5" to 3" O.D. support pipe, and a 24" removable RG-213 N-Male jumper.



ANT220F2 - 230 MHz
Vertical Plane
Gain = 2.58 dBd



SPECIFICATIONS

Frequency (continuous)	195-260 MHz	Dimensions (L x base diam.) in.	51 x 2.75
Gain	2.5 dBd	Tower weight (antenna + clamps)	11 lb.
Power rating (typ.)	500 watts	Shipping weight	14 lb.
Impedance	50 ohms	Wind rating / with 0.5" ice	200 / 150 MPH
VSWR	1.5:1 or less	Maximum exposed area	1.1 ft. ²
Pattern	Omnidirectional	Lateral thrust at 100 MPH	44 lb.
Vertical beamwidth	38°	Bending moment at top clamp	47 ft. lb.
Termination	Recessed N Female 7-16 DIN-F opt.	(100 MPH, 40 PSF flat plate equiv.)	

ANT220F6

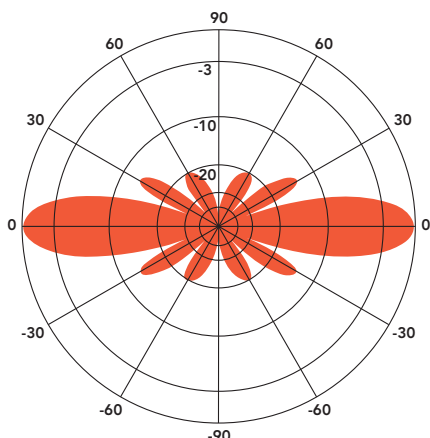
FIBERGLASS COLLINEAR ANTENNA 6 dBd

The Telewave ANT220F6 is an extremely rugged, medium-gain, fiberglass collinear antenna, designed for operation in all environmental conditions. The antenna is constructed with brass and copper elements, connected at DC ground potential for lightning impulse protection. The ANT220F6 is an excellent choice for wireless PTC systems in urban or rural areas.

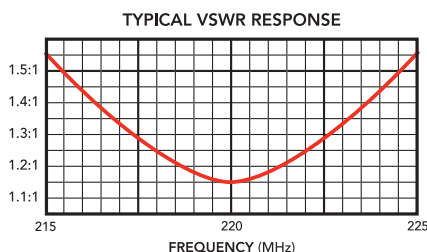
All junctions are fully soldered to prevent RF intermodulation, and each antenna is completely protected within a rugged, high-tech radome to ensure survivability in the worst environments. The "Cool Blue" radome provides maximum protection from corrosive gases, ultraviolet radiation, icing, salt spray, acid rain, and wind blown abrasives.

The ANT220F6 includes an ANTC482 dual clamp set for mounting to a 1.5" to 3.5" O.D. support pipe, and a 24" removable RG-213 N-Male jumper. Stand-off and top mounts are also available.

NOTE: THIS ANTENNA IS SHIPPED VIA TRUCK FREIGHT ONLY



ANT220F6 - 221 MHz
Vertical Plane
Gain = 6.11 dBd



SPECIFICATIONS

Frequency (continuous)	216-225 MHz	Dimensions (L x base diam.) in.	171 x 2.75
Gain	6 dBd	Tower weight (antenna + clamps)	35 lb.
Power rating (typ.)	500 watts	Shipping weight	50 lb.
Impedance	50 ohms	Wind rating / with 0.5" ice	150 / 125 MPH
VSWR	1.5:1 or less	Maximum exposed area	3.1 ft. ²
Pattern	Omnidirectional	Lateral thrust at 100 MPH	122 lb.
Vertical beamwidth	20°	Bending moment at top clamp	494 ft. lb.
Termination	Recessed N Female 7-16 DIN-F opt.	(100 MPH, 40 PSF flat plate equiv.)	

ANT355F6

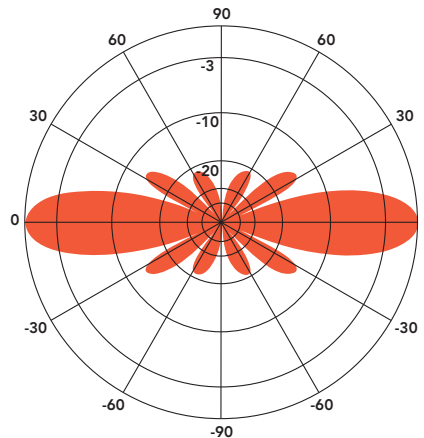
FIBERGLASS COLLINEAR ANTENNA 6 dBd

The Telewave ANT355F6 is an extremely rugged, medium-gain, fiberglass collinear antenna, designed for operation in all environmental conditions. The antenna is constructed with brass and copper elements, connected at DC ground potential for lightning impulse protection.

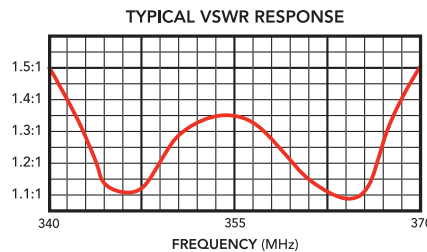
All junctions are fully soldered to prevent RF intermodulation, and each antenna is completely protected within a rugged, high-tech radome to ensure survivability in the worst environments. The "Cool Blue" radome provides maximum protection from corrosive gases, ultraviolet radiation, icing, salt spray, acid rain, and wind blown abrasives.

The ANT355F6 includes an ANTC482 dual clamp set for mounting to a 1.5" to 3.5" O.D. support pipe, and a 24" removable RG-213 N-Male jumper. Stand-off and top mounts are also available.

NOTE: THIS ANTENNA IS SHIPPED VIA TRUCK FREIGHT ONLY



ANT355F6 - 355 MHz
Vertical Plane
Gain = 6.27 dBd



SPECIFICATIONS

Frequency (continuous)	340-370 MHz	Dimensions (L x base diam.) in.	126 x 2.75
Gain	6 dBd	Tower weight (antenna + clamps)	26 lb.
Power rating (typ.)	500 watts	Shipping weight	37 lb.
Impedance	50 ohms	Wind rating / with 0.5" ice	150 / 125 MPH
VSWR	1.5:1 or less	Maximum exposed area	2.5 ft. ²
Pattern	Omnidirectional	Lateral thrust at 100 MPH	99 lb.
Vertical beamwidth	18°	Bending moment at top clamp	263 ft. lb.
Termination	Recessed N Female 7-16 DIN-F opt.	(100 MPH, 40 PSF flat plate equiv.)	

ANT385F6

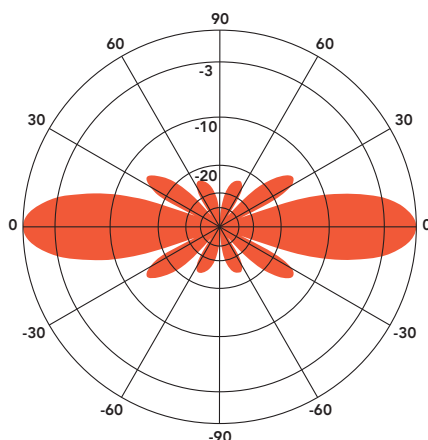
FIBERGLASS COLLINEAR ANTENNA 6 dBd

The Telewave ANT385F6 is an extremely rugged, medium-gain, fiberglass collinear antenna, designed for operation in all environmental conditions. The antenna is constructed with brass and copper elements, connected at DC ground potential for lightning impulse protection.

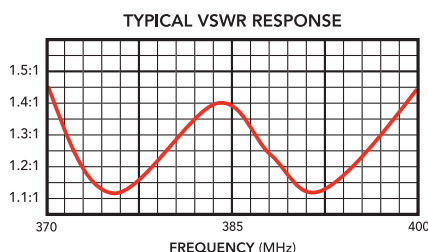
All junctions are fully soldered to prevent RF intermodulation, and each antenna is completely protected within a rugged, high-tech radome to ensure survivability in the worst environments. The "Cool Blue" radome provides maximum protection from corrosive gases, ultraviolet radiation, icing, salt spray, acid rain, and wind blown abrasives.

The ANT385F6 includes an ANTC482 dual clamp set for mounting to a 1.5" to 3.5" O.D. support pipe, and a 24" removable RG-213 N-Male jumper. Stand-off and top mounts are also available.

NOTE: THIS ANTENNA IS SHIPPED VIA TRUCK FREIGHT ONLY



ANT385F6 - 385 MHz
Vertical Plane
Gain = 6.12 dBd



SPECIFICATIONS

Frequency (continuous)	370-400 MHz	Dimensions (L x base diam.) in.	112 x 2.75
Gain	6 dBd	Tower weight (antenna + clamps)	24 lb.
Power rating (typ.)	500 watts	Shipping weight	35 lb.
Impedance	50 ohms	Wind rating / with 0.5" ice	150 / 125 MPH
VSWR	1.5:1 or less	Maximum exposed area	2.3 ft. ²
Pattern	Omnidirectional	Lateral thrust at 100 MPH	91 lb.
Vertical beamwidth	18°	Bending moment at top clamp	205 ft. lb.
Termination	Recessed N Female 7-16 DIN-F opt.	(100 MPH, 40 PSF flat plate equiv.)	

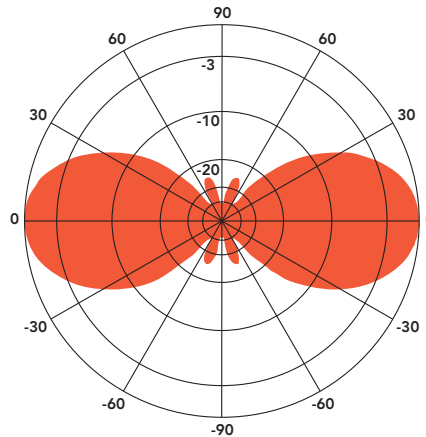
ANT400F2

FIBERGLASS COLLINEAR ANTENNA 2.5 dBd

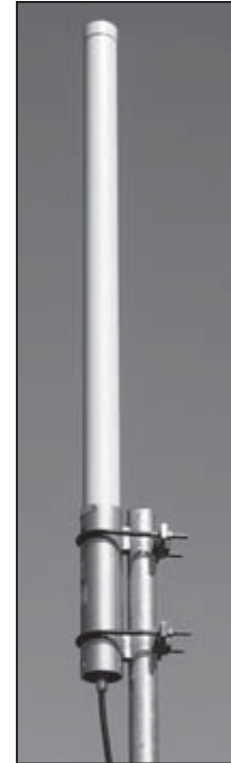
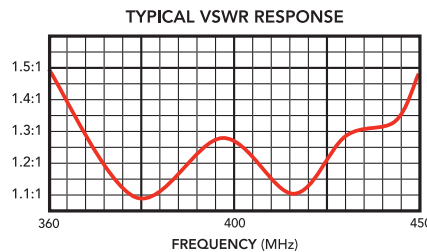
The Telewave ANT400F2 is an extremely rugged collinear antenna, with moderate gain and wide vertical beamwidth. This compact antenna produces 2.5 dBd gain, and is designed for operation in all environmental conditions. The antenna is constructed with brass and copper elements, with a path to ground potential for lightning impulse protection.

All junctions are fully soldered to prevent RF intermodulation, and each antenna is completely protected within a rugged, high-tech radome to ensure survivability in the worst environments. The "Cool Blue" radome provides maximum protection from corrosive gases, ultraviolet radiation, icing, salt spray, acid rain, and wind blown abrasives.

The ANT400F2 includes the ANT485 dual clamp set for mounting to a 1.5" to 3" O.D. support pipe, and a 24" removable RG-213 N-Male jumper.



ANT400F2 - 410 MHz
Vertical Plane
Gain = 2.51 dBd



SPECIFICATIONS			
Frequency (continuous)	360-455 MHz	Dimensions (L x base diam.) in.	44 x 2.75
Gain	2.5 dBd	Tower weight (antenna + clamps)	9 lb.
Power rating (typ.)	500 watts	Shipping weight	11 lb.
Impedance	50 ohms	Wind rating / with 0.5" ice	200 / 150 MPH
VSWR	1.5:1 or less	Maximum exposed area	1.0 ft. ²
Pattern	Omnidirectional	Lateral thrust at 100 MPH	39 lb.
Vertical beamwidth	38°	Bending moment at top clamp	33 ft. lb.
Termination	Recessed N Female 7-16 DIN-F opt.	(100 MPH, 40 PSF flat plate equiv.)	

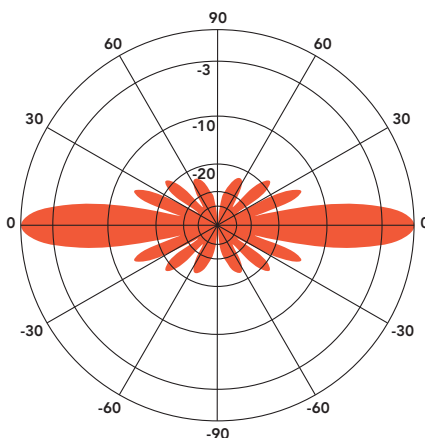
ANT415F6

FIBERGLASS COLLINEAR ANTENNA 6 dBd

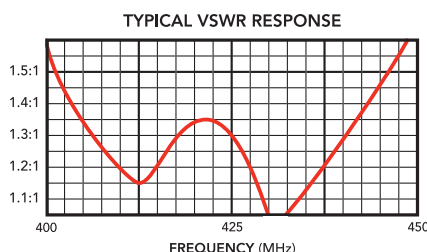
The Telewave ANT415F6 is an extremely rugged, medium-gain, fiberglass collinear antenna, designed for operation in all environmental conditions. The antenna is constructed with brass and copper elements, connected at DC ground potential for lightning impulse protection.

All junctions are fully soldered to prevent RF intermodulation, and each antenna is completely protected within a rugged, high-tech radome to ensure survivability in the worst environments. The "Cool Blue" radome provides maximum protection from corrosive gases, ultraviolet radiation, icing, salt spray, acid rain, and wind blown abrasives.

The ANT415F6 includes an ANTC482 dual clamp set for mounting to a 1.5" to 3.5" O.D. support pipe, and a 24" removable RG-213 N-Male jumper. Stand-off and top mounts are also available.



ANT415F6 - 421 MHz
Vertical Plane
Gain = 6.7 dBd



SPECIFICATIONS

Frequency (continuous)	405-440 MHz	Dimensions (L x base diam.) in.	101 x 2.375
Gain	6 dBd	Tower weight (antenna + clamps)	22 lb.
Power rating (typ.)	500 watts	Shipping weight	28 lb.
Impedance	50 ohms	Wind rating / with 0.5" ice	185 / 155 MPH
VSWR	1.5:1 or less	Maximum exposed area	1.7 ft. ²
Pattern	Omnidirectional	Lateral thrust at 100 MPH	68 lb.
Vertical beamwidth	18°	Bending moment at top clamp	149 ft. lb.
Termination	Recessed N Female 7-16 DIN-F opt.	(100 MPH, 40 PSF flat plate equiv.)	

ANT415F8

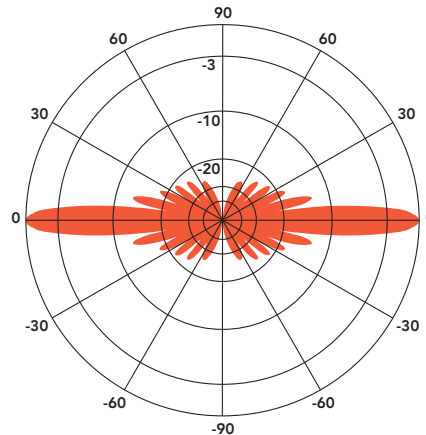
FIBERGLASS COLLINEAR ANTENNA 8 dBd

The Telewave ANT415F8 is an extremely rugged, high-gain fiberglass collinear antenna, designed for operation in all environmental conditions. The antenna is constructed with brass and copper elements, connected at DC ground potential for lightning impulse protection.

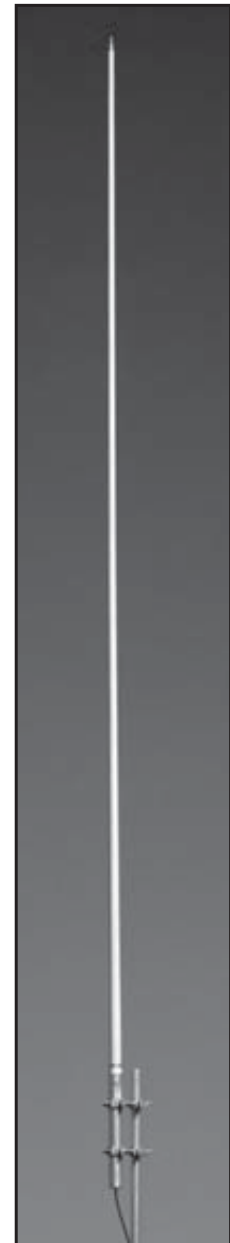
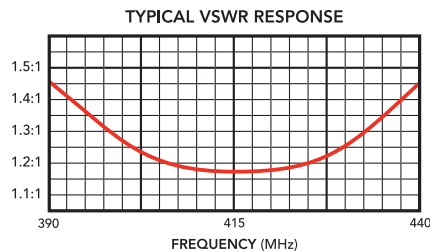
All junctions are fully soldered to prevent RF intermodulation, and each antenna is completely protected within a rugged, high-tech radome to ensure survivability in the worst environments. The "Cool Blue" radome provides maximum protection from corrosive gases, ultraviolet radiation, icing, salt spray, acid rain, and wind blown abrasives.

The ANT415F8 includes an ANTC482 dual clamp set for mounting to a 1.5" to 3.5" O.D. support pipe, and a 24" removable RG-213 N-Male jumper. Stand-off and top mounts are also available.

NOTE: THIS ANTENNA IS SHIPPED VIA TRUCK FREIGHT ONLY



ANT415F8 - 420 MHz
Vertical Plane
Gain = 8.68 dBd



SPECIFICATIONS

Frequency (continuous)	395-436 MHz	Dimensions (L x base diam.) in.	240 x 2.75
Gain	8 dBd	Tower weight (antenna + clamps)	40 lb.
Power rating (typ.)	500 watts	Shipping weight	60 lb.
Impedance	50 ohms	Wind rating / with 0.5" ice	150 / 125 MPH
VSWR	1.5:1 or less	Maximum exposed area	3.9 ft. ²
Pattern	Omnidirectional	Lateral thrust at 100 MPH	157 lb.
Vertical beamwidth	11°	Bending moment at top clamp	975 ft. lb.
Termination	Recessed N Female 7-16 DIN-F opt.	(100 MPH, 40 PSF flat plate equiv.)	

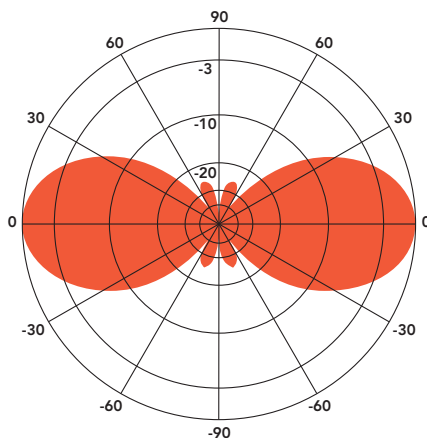
ANT425F2

FIBERGLASS COLLINEAR ANTENNA 2.5 dBd

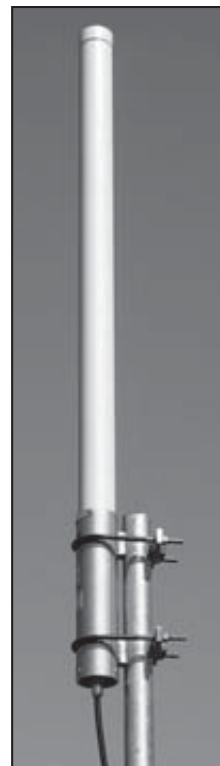
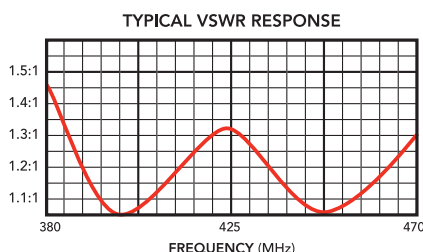
The Telewave ANT425F2 is an extremely rugged collinear antenna, with moderate gain and wide vertical beamwidth. This compact antenna produces 2.5 dBd gain, and is designed for operation in all environmental conditions. The antenna is constructed with brass and copper elements, with a path to ground potential for lightning impulse protection.

All junctions are fully soldered to prevent RF intermodulation, and each antenna is completely protected within a rugged, high-tech radome to ensure survivability in the worst environments. The "Cool Blue" radome provides maximum protection from corrosive gases, ultraviolet radiation, icing, salt spray, acid rain, and wind blown abrasives.

The ANT425F2 includes the ANTC485 dual clamp set for mounting to a 1.5" to 3" O.D. support pipe, and a 24" removable RG-213 N-Male jumper.



ANT425F2 - 425 MHz
Vertical Plane
Gain = 2.56 dBd



SPECIFICATIONS

Frequency (continuous)	380-470 MHz	Dimensions (L x base diam.) in.	42 x 2.75
Gain	2.5 dBd	Tower weight (antenna + clamps)	9 lb.
Power rating (typ.)	500 watts	Shipping weight	11 lb.
Impedance	50 ohms	Wind rating / with 0.5" ice	200 / 150 MPH
VSWR	1.5:1 or less	Maximum exposed area	1.0 ft. ²
Pattern	Omnidirectional	Lateral thrust at 100 MPH	38 lb.
Vertical beamwidth	38°	Bending moment at top clamp	30 ft. lb.
Termination	Recessed N Female 7-16 DIN-F opt.	(100 MPH, 40 PSF flat plate equiv.)	

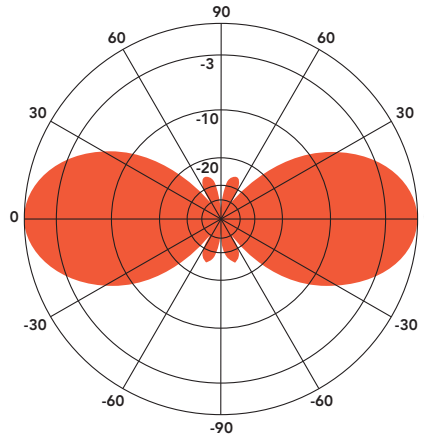
ANT450F2

FIBERGLASS COLLINEAR ANTENNA 2.5 dBd

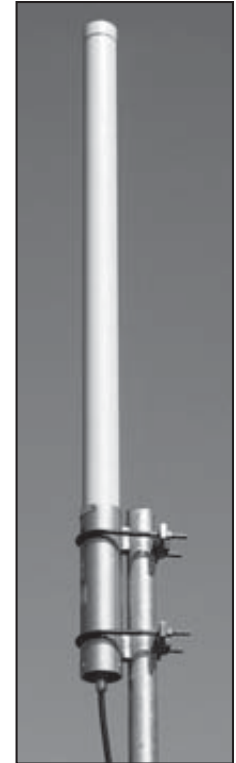
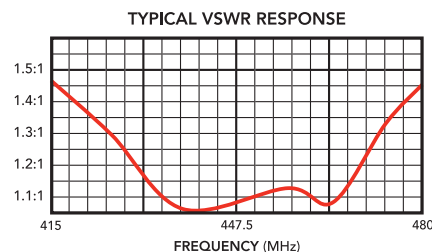
The Telewave ANT450F2 is an extremely rugged collinear antenna, with moderate gain and wide vertical beamwidth. This compact antenna produces 2.5 dBd gain, and is designed for operation in all environmental conditions. The antenna is constructed with brass and copper elements, with a path to ground potential for lightning impulse protection.

All junctions are fully soldered to prevent RF intermodulation, and each antenna is completely protected within a rugged, high-tech radome to ensure survivability in the worst environments. The "Cool Blue" radome provides maximum protection from corrosive gases, ultraviolet radiation, icing, salt spray, acid rain, and wind blown abrasives.

The ANT450F2 includes the ANTC485 dual clamp set for mounting to a 1.5" to 3" O.D. support pipe, and a 24" removable RG-213 N-Male jumper.



ANT450F2 - 447 MHz
Vertical Plane
Gain = 2.54 dBd



COLLINEAR

SPECIFICATIONS

Frequency (continuous)	420-480 MHz	Dimensions (L x base diam.) in.	42 x 2.75
Gain	2.5 dBd	Tower weight (antenna + clamps)	9 lb.
Power rating (typ.)	500 watts	Shipping weight	11 lb.
Impedance	50 ohms	Wind rating / with 0.5" ice	200 / 150 MPH
VSWR	1.5:1 or less	Maximum exposed area	1.0 ft. ²
Pattern	Omnidirectional	Lateral thrust at 100 MPH	38 lb.
Vertical beamwidth	38°	Bending moment at top clamp	30 ft. lb.
Termination	Recessed N Female 7-16 DIN-F opt.	(100 MPH, 40 PSF flat plate equiv.)	

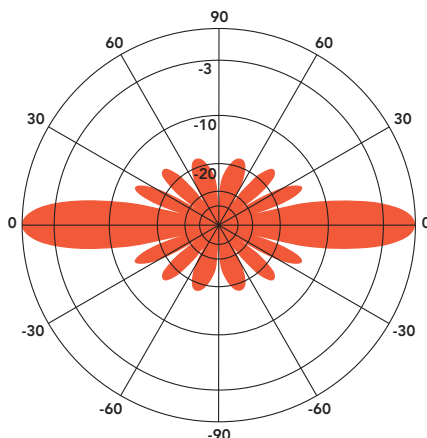
ANT450F6

FIBERGLASS COLLINEAR ANTENNA 6 dBd

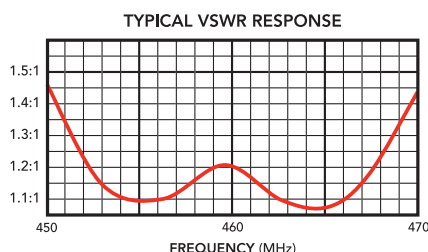
The Telewave ANT450F6 is an extremely rugged, medium-gain, fiberglass collinear antenna, designed for operation in all environmental conditions. The antenna is constructed with brass and copper elements, connected at DC ground potential for lightning impulse protection.

All junctions are fully soldered to prevent RF intermodulation, and each antenna is completely protected within a rugged, high-tech radome to ensure survivability in the worst environments. The "Cool Blue" radome provides maximum protection from corrosive gases, ultraviolet radiation, icing, salt spray, acid rain, and wind blown abrasives.

The ANT450F6 includes an ANTC482 dual clamp set for mounting to a 1.5" to 3.5" O.D. support pipe, and a 24" removable RG-213 N-Male jumper. Stand-off and top mounts are also available.



ANT450F6 - 460 MHz
Vertical Plane
Gain = 6.32 dBd



SPECIFICATIONS

Frequency (continuous)	445-480 MHz	Dimensions (L x base diam.) in.	94 x 2.375
Gain	6 dBd	Tower weight (antenna + clamps)	21 lb.
Power rating (typ.)	500 watts	Shipping weight	26 lb.
Impedance	50 ohms	Wind rating / with 0.5" ice	150 / 125 MPH
VSWR	1.5:1 or less	Maximum exposed area	1.5 ft. ²
Pattern	Omnidirectional	Lateral thrust at 100 MPH	60 lb.
Vertical beamwidth	18°	Bending moment at top clamp	143 ft. lb.
Termination	Recessed N Female 7-16 DIN-F opt.	(100 MPH, 40 PSF flat plate equiv.)	

ANT450F10

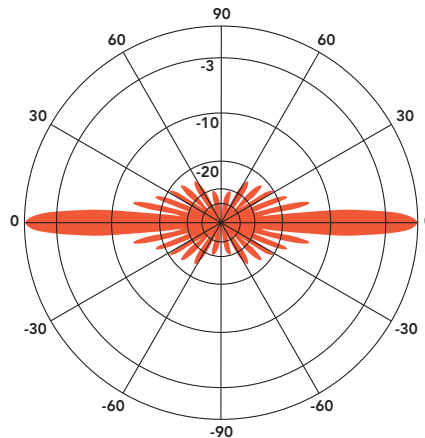
FIBERGLASS COLLINEAR ANTENNA 10 dBd

The Telewave ANT450F10 is an extremely rugged, high-gain, fiberglass collinear antenna, designed for operation in all environmental conditions. The antenna is constructed with brass and copper elements, connected at DC ground potential for lightning impulse protection.

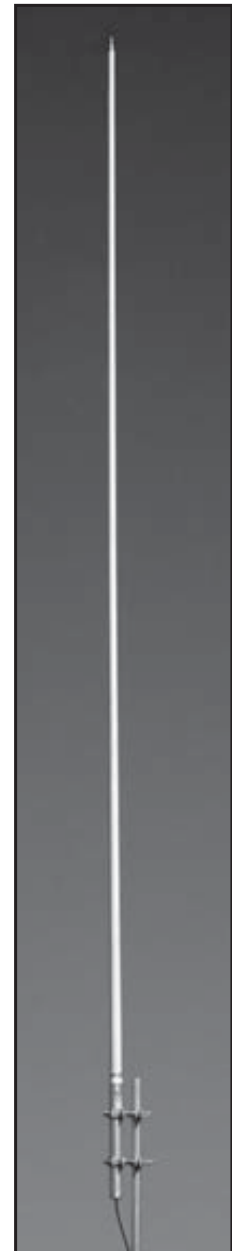
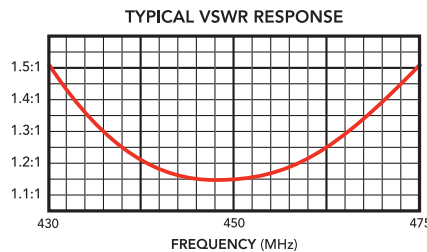
All junctions are fully soldered to prevent RF intermodulation, and each antenna is completely protected within a rugged, high-tech radome to ensure survivability in the worst environments. The "Cool Blue" radome provides maximum protection from corrosive gases, ultraviolet radiation, icing, salt spray, acid rain, and wind blown abrasives.

The ANT450F10 includes an ANTC482 dual clamp set for mounting to a 1.5" to 3.5" O.D. support pipe, and a 24" removable RG-213 N-Male jumper. Stand-off and top mounts are also available.

NOTE: THIS ANTENNA IS SHIPPED VIA TRUCK FREIGHT ONLY



ANT450F10 - 450 MHz
Vertical Plane
Gain = 10.06 dBd



SPECIFICATIONS

Frequency (continuous)	430-475 MHz	Dimensions (L x base diam.) in.	244 x 2.75
Gain	10 dBd	Tower weight (antenna + clamps)	41 lb.
Power rating (typ.)	500 watts	Shipping weight	62 lb.
Impedance	50 ohms	Wind rating / with 0.5" ice	150 / 125 MPH
VSWR	1.5:1 or less	Maximum exposed area	4.0 ft. ²
Pattern	Omnidirectional	Lateral thrust at 100 MPH	159 lb.
Vertical beamwidth	7°	Bending moment at top clamp	1010 ft. lb.
Termination	Recessed N Female 7-16 DIN-F opt.	(100 MPH, 40 PSF flat plate equiv.)	

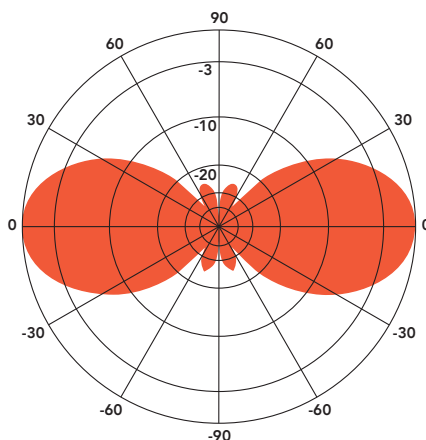
ANT480F2

FIBERGLASS COLLINEAR ANTENNA 2.5 dBd

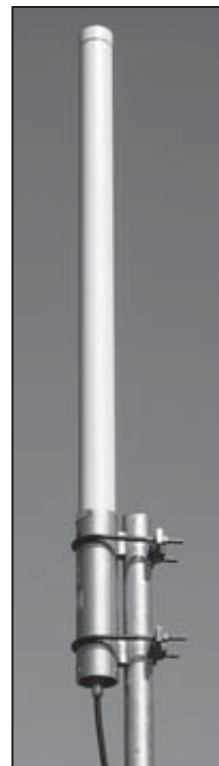
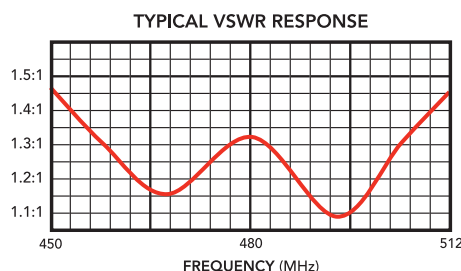
The Telewave ANT480F2 is an extremely rugged collinear antenna, with moderate gain and wide vertical beamwidth. This compact antenna produces 2.5 dBd gain, and is designed for operation in all environmental conditions. The antenna is constructed with brass and copper elements, with a path to ground potential for lightning impulse protection.

All junctions are fully soldered to prevent RF intermodulation, and each antenna is completely protected within a rugged, high-tech radome to ensure survivability in the worst environments. The "Cool Blue" radome provides maximum protection from corrosive gases, ultraviolet radiation, icing, salt spray, acid rain, and wind blown abrasives.

The ANT480F2 includes the ANTC485 dual clamp set for mounting to a 1.5" to 3" O.D. support pipe, and a 24" removable RG-213 N-Male jumper.



ANT480F2 - 487 MHz
Vertical Plane
Gain = 2.51 dBd



SPECIFICATIONS

Frequency (continuous)	450-512 MHz	Dimensions (L x base diam.) in.	42 x 2.75
Gain	2.5 dBd	Tower weight (antenna + clamps)	9 lb.
Power rating (typ.)	500 watts	Shipping weight	11 lb.
Impedance	50 ohms	Wind rating / with 0.5" ice	200 / 150 MPH
VSWR	1.5:1 or less	Maximum exposed area	1.0 ft. ²
Pattern	Omnidirectional	Lateral thrust at 100 MPH	38 lb.
Vertical beamwidth	38°	Bending moment at top clamp	30 ft. lb.
Termination	Recessed N Female 7-16 DIN-F opt.	(100 MPH, 40 PSF flat plate equiv.)	

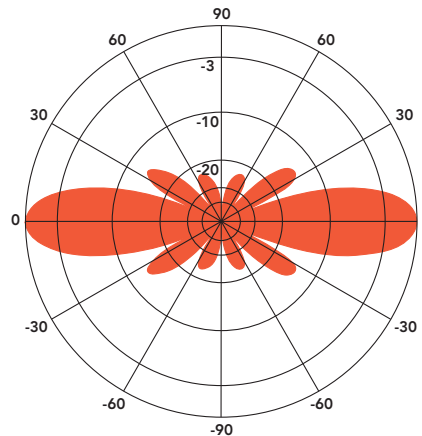
ANT500F6

FIBERGLASS COLLINEAR ANTENNA 6 dBd

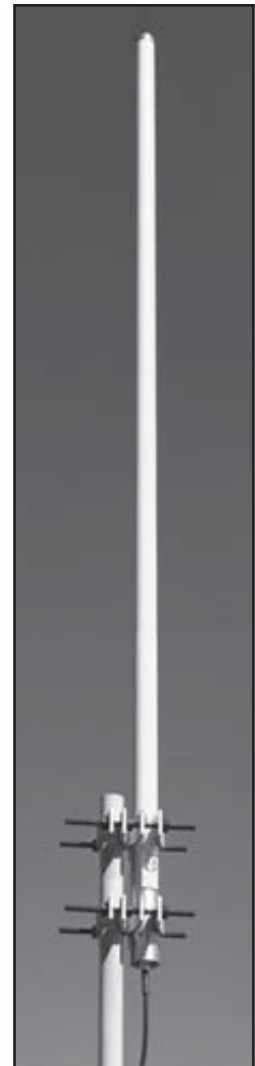
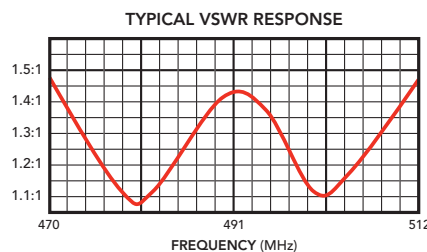
The Telewave ANT500F6 is an extremely rugged, medium-gain, fiberglass collinear antenna, designed for operation in all environmental conditions. The antenna is constructed with brass and copper elements, connected at DC ground potential for lightning impulse protection.

All junctions are fully soldered to prevent RF intermodulation, and each antenna is completely protected within a rugged, high-tech radome to ensure survivability in the worst environments. The "Cool Blue" radome provides maximum protection from corrosive gases, ultraviolet radiation, icing, salt spray, acid rain, and wind blown abrasives.

The ANT500F6 includes an ANT482 dual clamp set for mounting to a 1.5" to 3.5" O.D. support pipe, and a 24" removable RG-213 N-Male jumper. Stand-off and top mounts are also available.



ANT500F6 - 490 MHz
Vertical Plane
Gain = 6.28 dBd



COLLINEAR

SPECIFICATIONS

Frequency (continuous)	470-512 MHz	Dimensions (L x base diam.) in.	89 x 2.375
Gain	6 dBd	Tower weight (antenna + clamps)	20 lb.
Power rating (typ.)	500 watts	Shipping weight	25 lb.
Impedance	50 ohms	Wind rating / with 0.5" ice	150 / 125 MPH
VSWR	1.5:1 or less	Maximum exposed area	1.4 ft. ²
Pattern	Omnidirectional	Lateral thrust at 100 MPH	57 lb.
Vertical beamwidth	19°	Bending moment at top clamp	127 ft. lb.
Termination	Recessed N Female 7-16 DIN-F opt.	(100 MPH, 40 PSF flat plate equiv.)	

ANT500F10

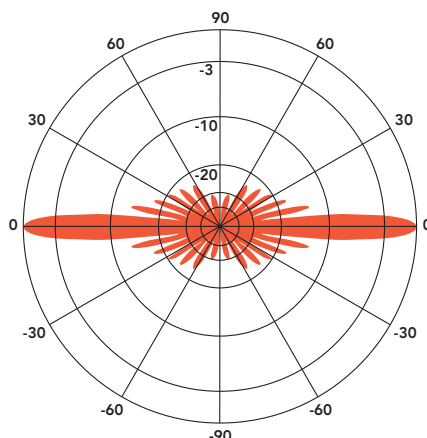
FIBERGLASS COLLINEAR ANTENNA 10 dBd

The Telewave ANT500F10 is an extremely rugged, high-gain, fiberglass collinear antenna, designed for operation in all environmental conditions. The antenna is constructed with brass and copper elements, connected at DC ground potential for lightning impulse protection.

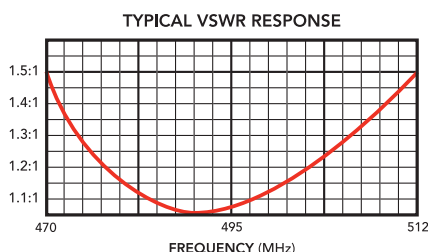
All junctions are fully soldered to prevent RF intermodulation, and each antenna is completely protected within a rugged, high-tech radome to ensure survivability in the worst environments. The "Cool Blue" radome provides maximum protection from corrosive gases, ultraviolet radiation, icing, salt spray, acid rain, and wind blown abrasives.

The ANT500F10 includes an ANTC482 dual clamp set for mounting to a 1.5" to 3.5" O.D. support pipe, and a 24" removable RG-213 N-Male jumper. Stand-off and top mounts are also available.

NOTE: THIS ANTENNA IS SHIPPED VIA TRUCK FREIGHT ONLY



ANT500F10 - 495 MHz
Vertical Plane
Gain = 10.06 dBd



SPECIFICATIONS

Frequency (continuous)	470-512 MHz	Dimensions (L x base diam.) in.	244 x 2.75
Gain	10 dBd	Tower weight (antenna + clamps)	41 lb.
Power rating (typ.)	500 watts	Shipping weight	62 lb.
Impedance	50 ohms	Wind rating / with 0.5" ice	150 / 125 MPH
VSWR	1.5:1 or less	Maximum exposed area	4.0 ft. ²
Pattern	Omnidirectional	Lateral thrust at 100 MPH	159 lb.
Vertical beamwidth	7°	Bending moment at top clamp	1010 ft. lb.
Termination	Recessed N Female 7-16 DIN-F opt.	(100 MPH, 40 PSF flat plate equiv.)	