



Specifications

| | |
|-----------------------|----------------------------|
| Model | AC-420450-3.5-100 |
| Frequency Range | 420-450 MHz |
| Gain | 3,5 dBi |
| Impedance | 50 ohms |
| VSWR | < 1.5:1 |
| Polarization | Vertical |
| Max. input power | 100 W |
| H-plane beamwidth | 360° (Omni) |
| E-plane beamwidth | 58° |
| Connector | N female |
| Height | 600 mm |
| Radome diameter | 70 mm |
| Weight | 1.63 kg (without bracket) |
| Rated Wind Velocity | 216 km/h |
| Radome | Fiberglass |
| Mounting | On 40-70 mm dia. mast tube |
| Operating Temperature | -40°C to +70°C |
| Ingress Protection | IP66 |

Applications

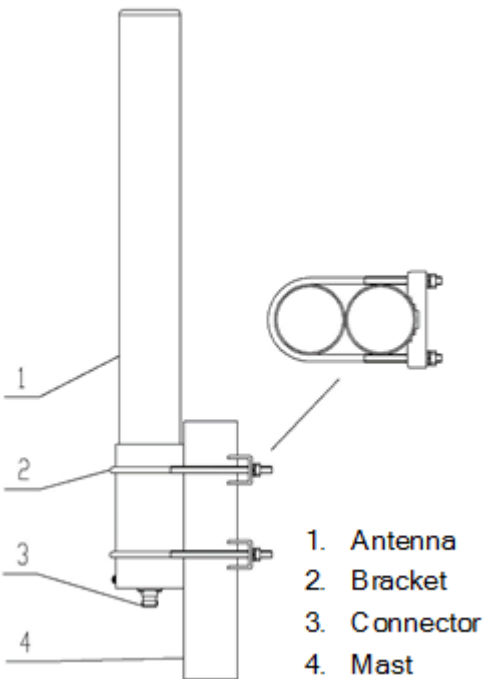
- 400MHz Band
- Wireless access system
- Trunking communications
- Signal coverage
- Network optimized

Features

- Broadband Design
- Simple Structure, Good performance
- Good environmental adaptability
- Outdoor used

The exceptional mechanical capabilities of this antenna ensures long dependable service in all environments.

Mounting Mounting hardware supplied.



Order Information:

AC-420450-3.5-100 Antenna 420-450 MHz, 3.5 dBi, 100W with N-female connector