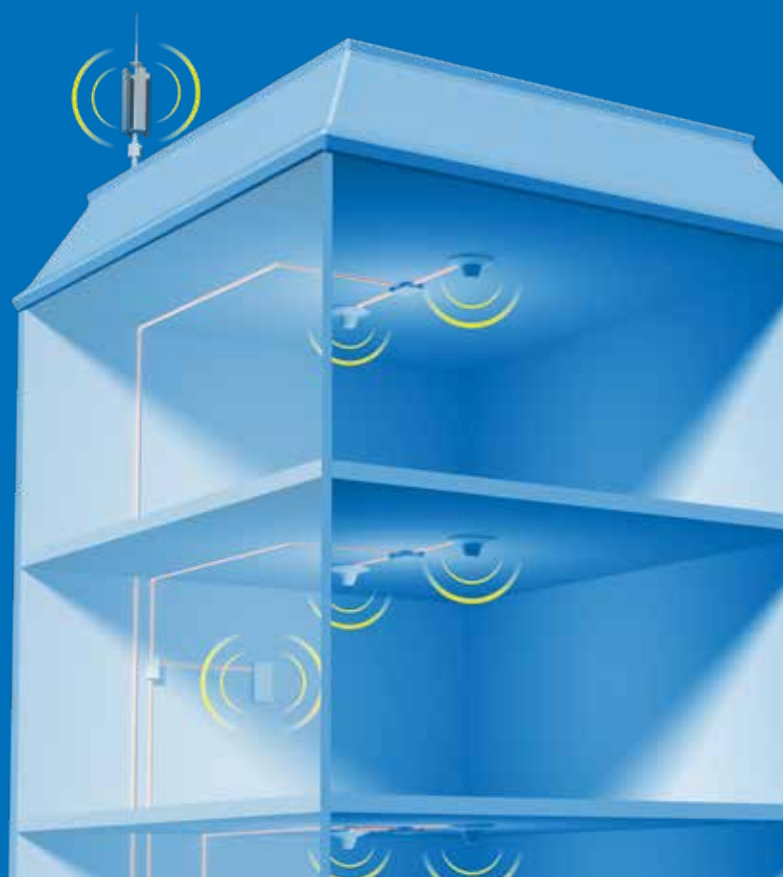


Passive DAS

LOW-PIM | FUTURE-PROOF 5G

PASSIVE LOW-PIM COMPONENTS FOR DISTRIBUTED ANTENNA SYSTEMS

In-Building Coverage Solutions
by Telegartner

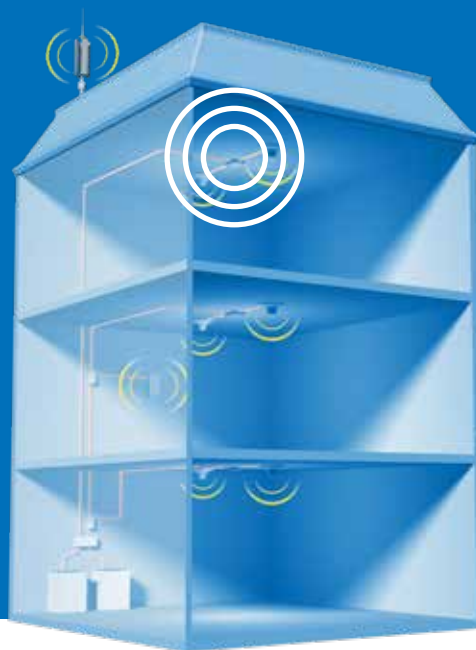


POWER SPLITTERS

Power Splitters with N or 4.3-10 connector interfaces.

Power Splitters are used to split a signal equally from one input port through two, three or four output ports. All listed splitters are suitable for low-PIM applications due to the low PIM level of ≤ -161 dBc and are also characterized by high power capacity and low VSWR.

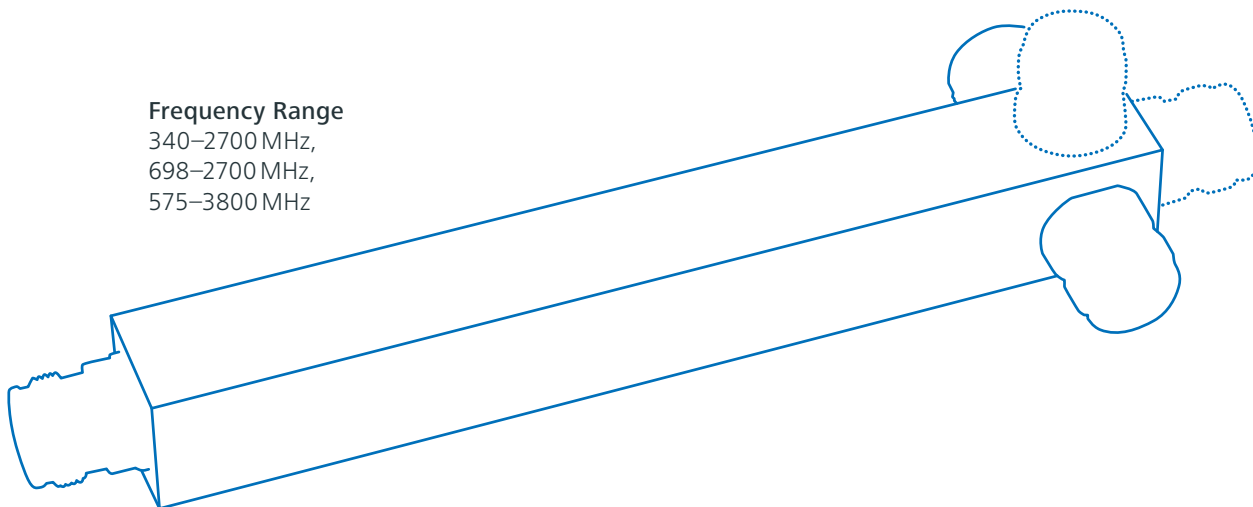
low-PIM



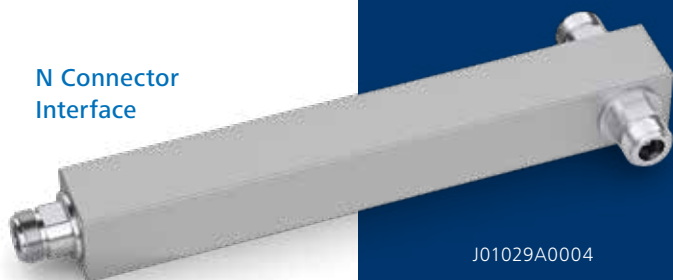
2-way, 3-way
or 4-way splits

Frequency Range

340–2700 MHz,
698–2700 MHz,
575–3800 MHz



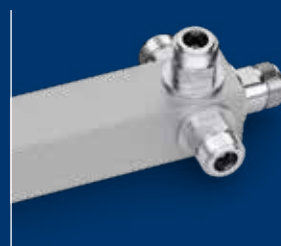
N Connector Interface



J01029A0004



J01029A0005



J01029A0006

4.3-10 Connector Interface



J01447A0001



J01447A0002



J01447A0003

| Part Number | Connector Interface | Frequency Range | Splits | Split Loss | PIM (@2 × 43 dBm) | Av. Power Rating | Environmental |
|-------------|---------------------|-----------------|--------|------------|-------------------|------------------|---------------|
| J01029A0019 | N female | 340–2700 MHz | 2-way | 3 dB | ≤ -161 dBc | 200 W | IP65 |
| J01029A0020 | N female | 340–2700 MHz | 3-way | 4.8 dB | ≤ -161 dBc | 200 W | IP65 |
| J01029A0021 | N female | 340–2700 MHz | 4-way | 6 dB | ≤ -161 dBc | 200 W | IP65 |
| J01029A0004 | N female | 698–2700 MHz | 2-way | 3 dB | ≤ -161 dBc | 200 W | IP65 |
| J01029A0005 | N female | 698–2700 MHz | 3-way | 4.8 dB | ≤ -161 dBc | 200 W | IP65 |
| J01029A0006 | N female | 698–2700 MHz | 4-way | 6 dB | ≤ -161 dBc | 200 W | IP65 |
| J01029A0007 | N female | 575–3800 MHz | 2-way | 3 dB | ≤ -161 dBc | 200 W | IP65 |
| J01029A0008 | N female | 575–3800 MHz | 3-way | 4.8 dB | ≤ -161 dBc | 200 W | IP65 |
| J01029A0009 | N female | 575–3800 MHz | 4-way | 6 dB | ≤ -161 dBc | 200 W | IP65 |
| J01447A0030 | 4.3-10 female | 340–2700 MHz | 2-way | 3 dB | ≤ -161 dBc | 300 W | IP65 |
| J01447A0031 | 4.3-10 female | 340–2700 MHz | 3-way | 4.8 dB | ≤ -161 dBc | 300 W | IP65 |
| J01447A0032 | 4.3-10 female | 340–2700 MHz | 4-way | 6 dB | ≤ -161 dBc | 300 W | IP65 |
| J01447A0001 | 4.3-10 female | 698–2700 MHz | 2-way | 3 dB | ≤ -161 dBc | 300 W | IP65 |
| J01447A0002 | 4.3-10 female | 698–2700 MHz | 3-way | 4.8 dB | ≤ -161 dBc | 300 W | IP65 |
| J01447A0003 | 4.3-10 female | 698–2700 MHz | 4-way | 6 dB | ≤ -161 dBc | 300 W | IP65 |
| J01447A0004 | 4.3-10 female | 575–3800 MHz | 2-way | 3 dB | ≤ -161 dBc | 300 W | IP65 |
| J01447A0005 | 4.3-10 female | 575–3800 MHz | 3-way | 4.8 dB | ≤ -161 dBc | 300 W | IP65 |
| J01447A0006 | 4.3-10 female | 575–3800 MHz | 4-way | 6 dB | ≤ -161 dBc | 300 W | IP65 |

H06000A0084 L-Type Bracket for Splitters included

Telegärtner
Karl Gärtner GmbH

Lerchenstr. 35
D-71144 Steinenbronn

Tel. +49 71 57/1 25-0
Fax +49 71 57/1 25-5120

info@telegaertner.com
www.telegaertner.com

**Would you like to discover our entire
portfolio for Antenna Line Products?**

Please have a look at our catalogue „Components
for Mobile Communication Networks“ on our
website www.telegaertner.com/go/MCS

Your distributor:

www.tt-telecom.ru