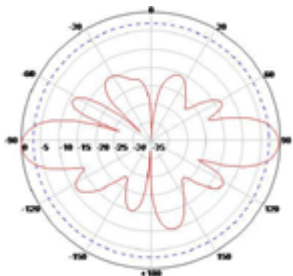




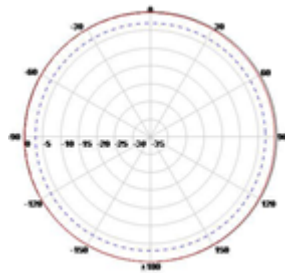
Specifications

Model	AC-450470-8-500
Frequency Range	450-470 MHz
Gain	8±1 dBi
Impedance	50 ohms
VSWR	< 1.5:1
Polarization	Vertical
Maximum input power	500 W
H-plane beamwidth	360° (Omni)
E-plane beamwidth	18° (half power)
Connector	N female
Height	2380 mm
Radome diameter	61 mm
Weight	4.5 kg (without bracket)
Packing size (mm)	2460*110*130
Rated Wind Velocity	200 km/h
Radome	Fiberglass
Mounting	On 40-60 mm dia. mast tube
Operating Temperature	-40°C to +70°C

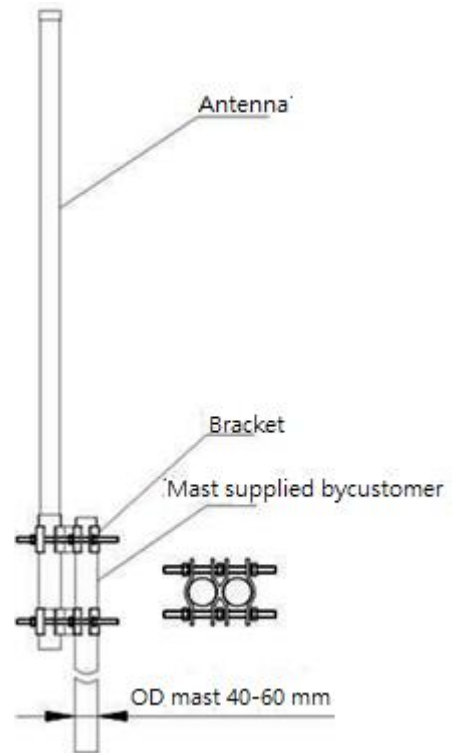
Mounting Mounting hardware supplied



E-plane
Vertical pattern - V-polarization



H-plane
Horizontal pattern - V-polarization



Order Information:

AC-450470-8-500 Antenna 450-470 MHz, 8dBi, 500W with N-female connector